

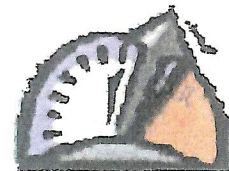
Road Weight Changes new in 2009

- Effective 8-1-2009
- Allows 80,000 pounds on all paved routes.
 - Must comply with axle weight limits.
- 80,000 pound maximum for gravel nine ton routes (previously limited to 73,280 on 5 axles)
- All roads and bridges subject to postings as needed to limit excessive road and bridge damage
 - By County, City, Township road authorities

Statute 169.824 Sub 2 (1)

Minnesota Weight Limits

- 10 Ton routes:
 - State Highways
 - US Highways
 - Interstate Highways
 - Paved local routes unless otherwise posted
- 80,000 pounds on properly spaced axles
- 20,000 pounds on a single axle load
 - Idle reduction technology



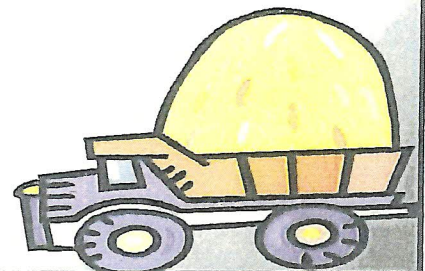
Statute 169.824 Sub 2 (1) for 80,000 pound gross weight,
Statute 169.823 Sub 1 (2) for 9 or 10-ton axle weights

- 9 Ton routes
- Posted (signed) routes
- Unpaved highways including:
 - Gravel County Highways (unpaved)
 - Gravel Township Highways (unpaved)
 - Unpaved City Streets (alleys)
- 80,000 pounds allowed with.....
- 18,000 pounds single axle loads
 - No longer a 73,280 pound maximum
 - Effective 8-1-2009



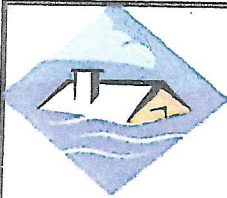
Damage Factors

- A 20% single 9-ton axle overload (3600 pounds) does over two times the damage as a legally loaded 18,000 pound single axle
- A 20% tandem overload (6800 pounds) causes 2.25 times the damage as a legal tandem of 34000 pounds
- It doesn't take twice the weight to do twice the damage



Besides Gross Weight, limits also apply to the vehicle's weight bearing components

- Single Axles (unless restricted) 169.823 Sub 1 (2)
 - 9 ton or 10 ton limits
 - 18,000# for 9 ton or 20,000# for 10-ton
- Wheels 169.823 Sub 1 (1)
 - 9 ton or 10 ton limits
 - 9,000# for 9 ton or 10,000# for 10-ton
- Tires (# per inch of tire size) 169.823 Sub 1 (3)
 - 600# for steering axles (foremost or rearmost) 500# for non-steering per inch of tire size
 - Size is taken from the tire not physically measured
 - Must also comply with ratings (lesser of the two)



Snow, Ice, & Floods

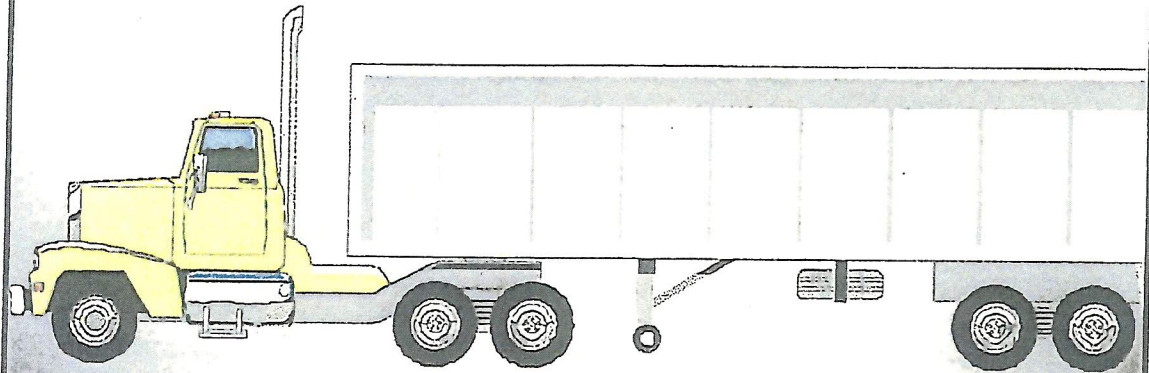
- Vehicles involved in snow removal, ice removal or flood control are exempt from Statutes 169.
 - Except DWI.
- Must be working on behalf of state or local government.
 - Includes rented or hired vehicles
- Trucks “sanding” in the winter are exempt.
- Trucks “stockpiling” in the summer are not.

Statute 169.035 Subd 1



Gross Vehicle Weight

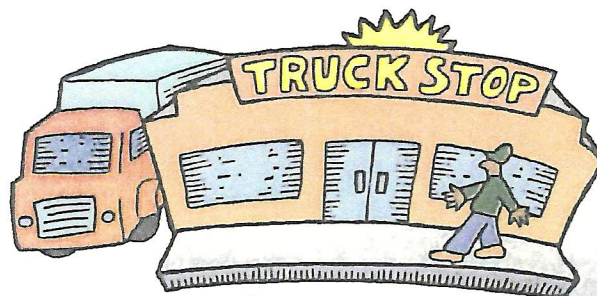
**80,000 Pounds allowed on all highways
with legal axle load limits**



Statute 169.824 Sub 2 (1)

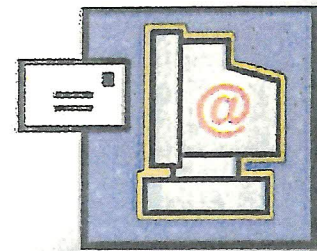
Reasonable Access

- Federal Regulation 23 CFR 658.19
- Allows one mile distance for vehicles travelling at Interstate System weight limits to have access between that system and terminals and facilities for:
 - Food
 - Fuel
 - Repairs
 - Rest
- Cannot exceed posted limits (safety issue)



Road Weight Information Link

- Minnesota:
- <http://www.mrr.dot.state.mn.us>
 - Click on “Seasonal Load Limits”
 - Can also subscribe to e-mail updates
- Phone: 1-800-723-6543

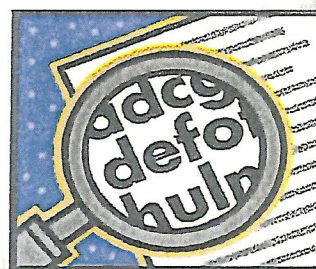


Winter Load Increase and 9-ton?

- Posted (with sign) 9-ton roads receive no axle weight increase during WLI. 169.826 Sub 4
- Un-posted 9 ton (gravel) roads do get axle and gross increases up to 10%.
 - Within the axle allowances allowed by the gross weight table.
- Road postings normally reduce axle weights
 - Not gross weight
 - If gross weight is posted there is no gross weight increase during the winter load increase

10 percent differences:

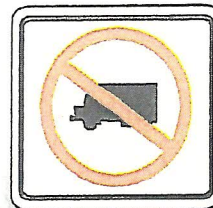
- Winter – Permit needed only on Interstate routes.
- Harvest – Permit needed and valid **ONLY** on State trunk highways.
 - **Only** for potatoes, carrots, sugar beets
 - Not valid on Interstate
 - Not valid on county roads
 - Not valid on township routes
 - Not valid on city streets
- **Counties can permit local routes**



Road Restriction Rules and Conditions

- Paved routes remain at 10-ton limits unless otherwise posted
- Unpaved routes drop to 5-ton limits unless otherwise posted
- Road authorities may post routes to a lower weight as needed, to preserve roads from unnecessary damage.

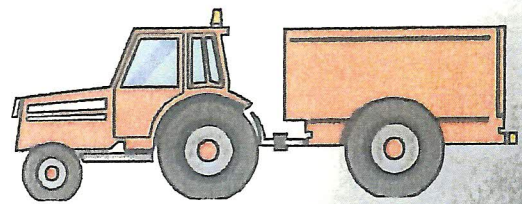
Statute 169.87 Sub 2 (a) 1 & 2



Towed Implements of Husbandry

- Cannot exceed 500 pounds per inch of tire width
 - Must be pneumatic tires
 - Must be a towed implement
- Does not apply to vehicles on tracks
 - Not pneumatic tires

Statute 169.801 Sub 2



Exempt from 500 pounds per inch as is tracked

2008 New Implement Legislation

- All implements must comply with bridge weight signs and..after December 31, 2009...
- A person operating or towing an implement of husbandry on a bridge must comply with the gross weight limitations on the axle weight chart.

169.801 Subd 2



169.865 Agricultural Weight Increases

- For raw or unprocessed agricultural products only
- Weights allowed on 10-ton routes.... 6 or more axles = 90,000# & 7 or more axles = 97,000#
- Not Valid on Interstate Highways
- Requires Transportation Permit from each road authority where hauling is authorized
- Must comply with all road & bridge weight postings
- Must have brakes on all wheels
- No special tolerances or allowances
 - Including relevant evidence (civil weight) laws

