

STATE OF MINNESOTA
Before the
JOINT DRAINAGE AUTHORITY BOARD FOR FARIBAUT AND MARTIN
COUNTIES
SITTING AS THE DRAINAGE AUTHORITY FOR
Judicial Ditch #7

In the Matter of:

Repair of Judicial Ditch #7

PUBLIC HEARING NOTICE

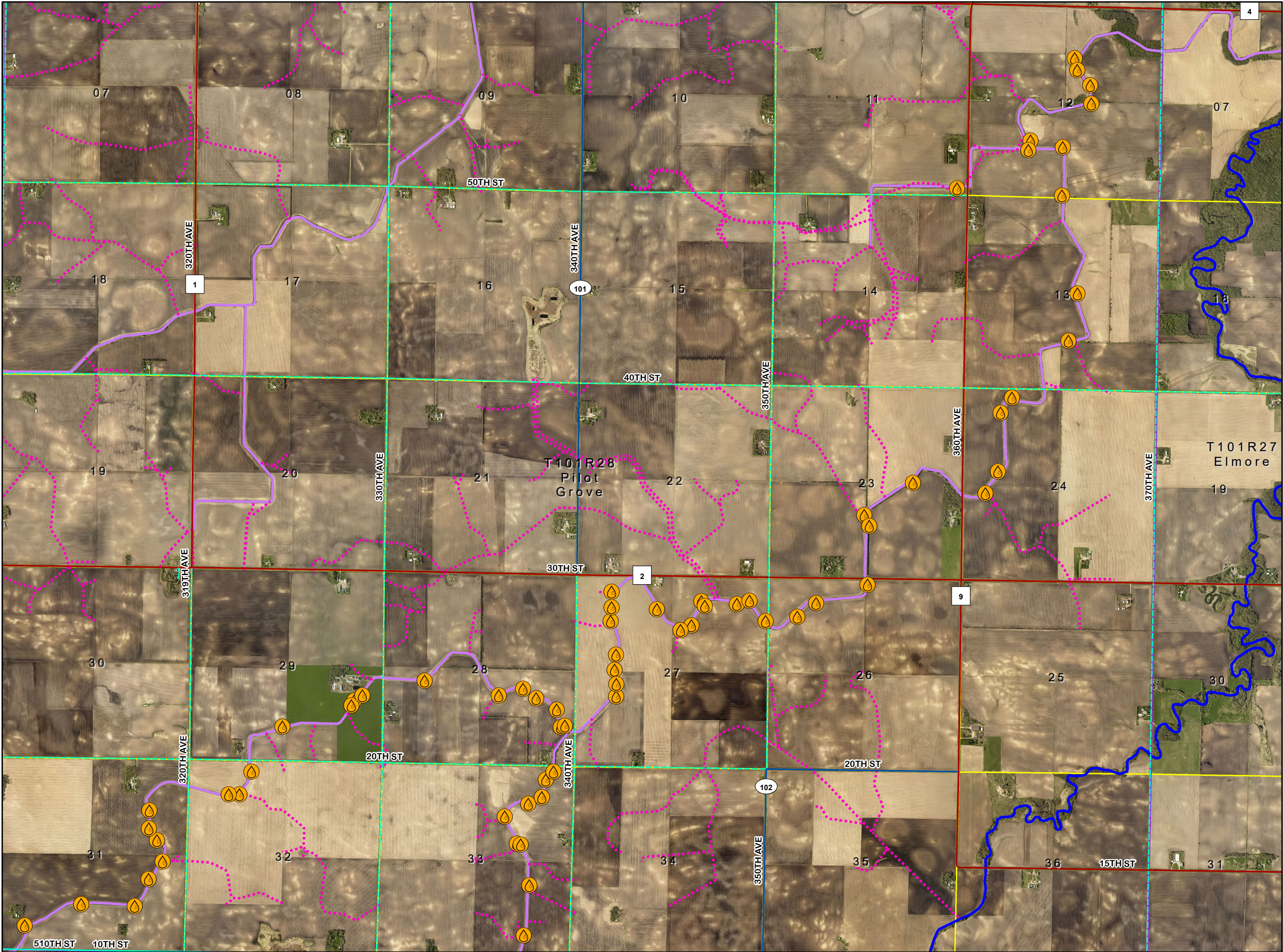
PLEASE TAKE NOTICE, Joint Drainage Board of Faribault and Martin Counties, sitting as the joint drainage authority for Judicial Ditch #7, pursuant to Minn. Stat. § 103E.705, may hold a public hearing proposed repairs of drainage system waters located in Sections 7, 11-14, 23-24, 26-29, 31-33 Pilot Grove Township Faribault County and Sections 25-27 and 36 East Chain Township Martin County, Minnesota. The hearing shall be held at **3:00 p.m. on March 17, 2020, at Hamilton Hall, 202 South Moore Street, Blue Earth, MN 56013**. At the hearing, the drainage authority will hear staff and accept public comment regarding the proposed repairs. Any party having an interest in the project may appear and provide comment.

Copies of the proposed repair is available for inspection at the Faribault County Auditor Office, 415 North Main Blue Earth, MN 56013, Martin County Auditor Office, 201 Lake Ave. Fairmont, MN 56031, or online at <http://www.co.faribault.mn.us/drainage/pages/notices-reports>. Written comments will be accepted at the hearing and by mail at the office of the Faribault County Auditor, 415 North Main Blue Earth, MN 56013.

You are receiving this notice because you are an owner of property or political subdivision likely to be affected by the proposed repair of drainage system on Judicial Ditch #7.

Darren Esser

Dated:



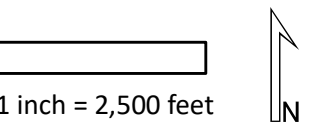
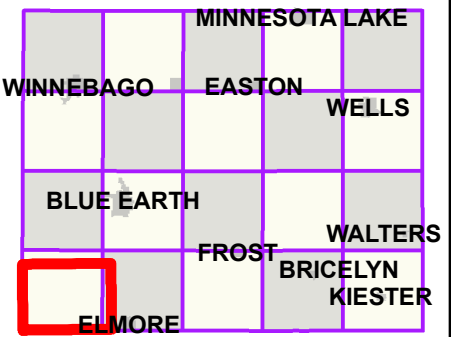
Faribault County
Drainage Department
www.co.faribault.mn.us

JD7MF Side Inlet Repair

Legend

- Public Open Ditch
- Public Shallow Ditch
- Public Tile
- Side Inlet Repair
- Survey Township

Faribault County



Disclaimer: Faribault County and Faribault County SWCD do not warrant or guarantee accuracy of the GIS data. The data is meant for reference purposes only and should not be used for official decisions. The data contained in the maps were compiled from the best available records that could be found and may contain errors or omissions.