

# FINAL ACCEPTANCE REPORT

## Faribault County Ditch No. 20

Project No. 19916

June 2021

REPORT FOR:

Merissa Lore

Drainage Authority

Faribault County

415 South Grove Street

Blue Earth, MN, 56013

507.526.2388

[merissa.lore@co.faribault.mn.us](mailto:merissa.lore@co.faribault.mn.us)

FROM:

Mark Origer, PE

Civil Engineer

ISG

115 E Hickory Street, Suite 300

Mankato, MN 56001

507.387.6651

[mark.origer@isginc.com](mailto:mark.origer@isginc.com)

ISG



June 24th, 2021

Merissa Lore  
Faribault County Drainage Authority  
415 South Grove Street  
Blue Earth, MN 56013

Re: Faribault County Ditch No. 20 Closeout

Ms. Lore:

The Repair to Faribault County Ditch No. 20 has been fully completed. The contractor Brunz Construction Co, Inc. from Madison Lake, MN has completed 100% of the project including the final punch list.

The cost estimate for construction, including contingency, from the Repair Report was \$369,210.00. The original contract price was \$263,732.35 with an additional \$25,625.00 of change orders; the final approved contract price is \$289,357.35 but there were significant savings on tile outlets and a few other items estimated compared to estimated quantities. The open ditch cleaning and topsoil stripping was also removed from the project which reduced the overall cost from the estimate. The total value of all completed work is \$205,720.00.

To date, the contractor has been paid \$187,444.31 with an unpaid balance of \$18,275.69 left on retainage and unpaid bid items to be paid. The final payment being requested is \$83,637.35 under the approved contract price. The As-built Drawings, Damage Report, Total Completed Quantities, and Final Pay Request No. 9 are enclosed.

We recommend payment and final acceptance of this project at this time.

Please feel free to contact us with any questions.

Sincerely,



Mark Origer, P.E.

Enclosure  
Attachment

Cc: Tom Brunz – Brunz Construction Co Inc.



# APPENDIX A: As-Built Plans



FARIBAULT COUNTY  
COUNTY DITCH 20 REPAIRS

BARBER & WALNUT LAKE TWPS. FINAL CONSTRUCTION PLANS FOR: ISG PROJECT # 16-19916  
DITCH REPAIR BASE BID



LEGEND

EXISTING

CITY LIMITS

SECTION LINE

QUARTER SECTION LINE

RIGHT OF WAY LINE

PROPERTY / LOTLINE

EASEMENT LINE

ACCESS CONTROL

WATER EDGE

WETLAND BOUNDARY

WETLAND / MARSH

FENCE LINE

CULVERT

STORM SEWER

SANITARY SEWER

SANITARY SEWER FORCEMAIN

WATER

UNDERGROUND TELEPHONE

OVERHEAD ELECTRIC

UNDERGROUND ELECTRIC

UNDERGROUND TV

GAS

UNDERGROUND FIBER OPTIC

CONTOUR (MAJOR)

CONTOUR (MINOR)

DECIDUOUS TREE

CONIFEROUS TREE

TREE LINE

MANHOLE/STRUCTURE

CATCH BASIN

HYDRANT

VALVE

CURB STOP

POWER POLE

UTILITY PEDESTAL / CABINET

PROPOSED

LOT LINE

RIGHT OF WAY

EASEMENT

CULVERT

STORM SEWER

STORM SEWER (PIPE WIDTH)

SANITARY SEWER

SANITARY SEWER (PIPE WIDTH)

WATER

OVERHEAD ELECTRIC

UNDERGROUND ELECTRIC

UNDERGROUND TV

GAS

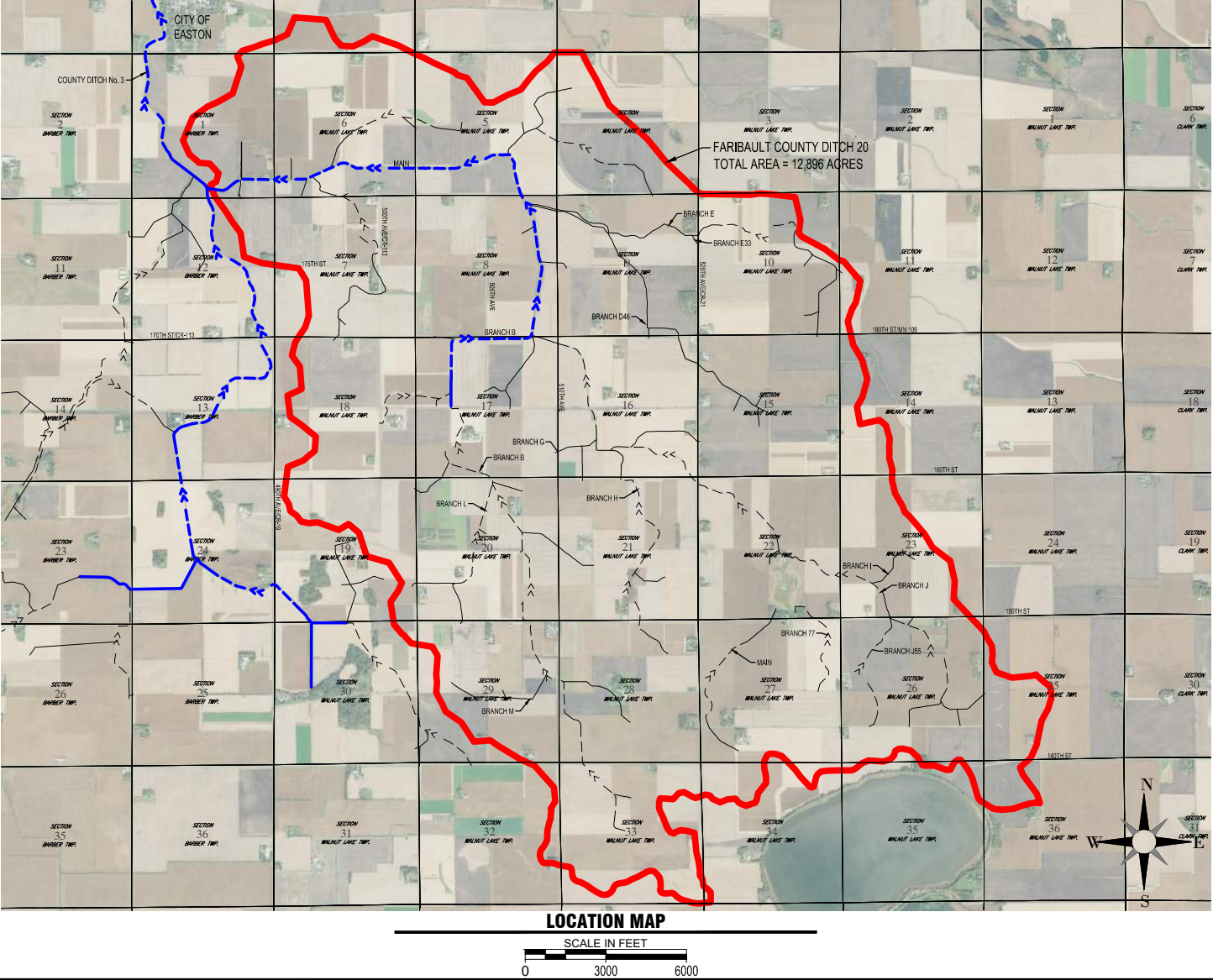
CONTOUR

MANHOLE

CATCH BASIN

HYDRANT

VALVE



SHEET INDEX

1 TITLE

2 NOTES & QUANTITIES

3 DETAILS

4 DETAILS

5 ASI DETAILS

6 DETAILS

7 EROSION CONTROL PLAN

8 EXISTING WATERSHED

9 EXISTING OPEN DITCH

10 MAINLINE PLAN & PROFILE

11 MAINLINE PLAN & PROFILE

12 MAINLINE PLAN & PROFILE

13 MAINLINE PLAN & PROFILE

14 MAINLINE PLAN & PROFILE

15 MAINLINE PLAN & PROFILE

16 MAINLINE PLAN & PROFILE

17 BRANCH B PLAN & PROFILE

18 BRANCH B PLAN & PROFILE

PROJECT GENERAL NOTES

1. ALL WORK SHALL CONFORM TO THE CONTRACT DOCUMENTS, WHICH INCLUDE, BUT ARE NOT LIMITED TO, THE OWNER - CONTRACTOR AGREEMENT, THE PROJECT MANUAL (WHICH INCLUDES GENERAL SUPPLEMENTARY CONDITIONS AND SPECIFICATIONS), DRAWINGS OF ALL DISCIPLINES AND ALL ADDENDA, MODIFICATIONS AND CLARIFICATIONS ISSUED BY THE ARCHITECT/ENGINEER.

2. CONTRACT DOCUMENTS SHALL BE ISSUED TO ALL SUBCONTRACTORS BY THE GENERAL CONTRACTOR IN COMPLETE SETS IN ORDER TO ACHIEVE THE FULL EXTENT AND COMPLETE COORDINATION OF ALL WORK.

3. WRITTEN DIMENSIONS TAKE PRECEDENCE OVER SCALED DIMENSIONS. NOTIFY ARCHITECT/ENGINEER OF ANY DISCREPANCIES OR CONDITIONS REQUIRING INFORMATION OR CLARIFICATION BEFORE PROCEEDING WITH THE WORK.

4. FIELD VERIFY ALL EXISTING CONDITIONS AND DIMENSIONS. NOTIFY ARCHITECT/ENGINEER OF ANY DISCREPANCIES OR CONDITIONS REQUIRING INFORMATION OR CLARIFICATION BEFORE PROCEEDING WITH THE WORK.

5. DETAILS SHOWN ARE INTENDED TO BE INDICATIVE OF THE PROFILES AND TYPE OF DETAILING REQUIRED THROUGHOUT THE WORK. DETAILS NOT SHOWN ARE SIMILAR IN CHARACTER TO DETAILS SHOWN. WHERE SPECIFIC DIMENSIONS, DETAILS OR DESIGN INTENT CANNOT BE DETERMINED, NOTIFY ARCHITECT/ENGINEER BEFORE PROCEEDING WITH THE WORK.

6. ALL MANUFACTURED ARTICLES, MATERIALS AND EQUIPMENT SHALL BE APPLIED, INSTALLED, CONNECTED, ERECTED, CLEANED AND CONDITIONED ACCORDING TO MANUFACTURERS' INSTRUCTIONS. IN CASE OF DISCREPANCIES BETWEEN MANUFACTURERS' INSTRUCTIONS AND THE CONTRACT DOCUMENTS, NOTIFY ARCHITECT/ENGINEER BEFORE PROCEEDING WITH THE WORK.

7. ALL DISSIMILAR METALS SHALL BE EFFECTIVELY ISOLATED FROM EACH OTHER TO AVOID GALVANIC CORROSION.

8. THE LOCATION AND TYPE OF ALL INPLACE UTILITIES SHOWN ON THE PLANS ARE FOR GENERAL INFORMATION ONLY AND ARE ACCURATE AND COMPLETE TO THE BEST OF THE KNOWLEDGE OF I & S GROUP, INC. (ISG). NO WARRANTY OR GUARANTEE IS IMPLIED. THE CONTRACTOR SHALL VERIFY THE SIZES, LOCATIONS AND ELEVATIONS OF ALL INPLACE UTILITIES PRIOR TO CONSTRUCTION. CONTRACTOR SHALL IMMEDIATELY NOTIFY ENGINEER OF ANY DISCREPANCIES OR VARIATIONS FROM PLAN.

9. THE CONTRACTOR IS TO CONTACT "GOPHER STATE ONE CALL" FOR UTILITY LOCATIONS. MINIMUM 2 BUSINESS DAYS PRIOR TO ANY EXCAVATION / CONSTRUCTION (1-800-252-1166).

PROJECT INDEX:

OWNER:

FARIBAULT COUNTY DRAINAGE AUTHORITY  
415 S GROVE STREET, SUITE 8  
BLUE EARTH, MN 56013  
PH: (507) 526-2388

PROJECT ADDRESS / LOCATION:

SECTIONS 1, 12 OF BARBER TWP.  
SECTIONS 4, 5, 6, 7, 10, 11, 14, 18, 19, 23, 25, 26, 27, 29, 32, 33, 34, 35, 36 OF WALNUT LAKE TWP.  
FARIBAULT COUNTY, MN

MANAGING OFFICE:

ISG

MANKATO OFFICE  
115 E HICKORY STREET  
SUITE 300  
MANKATO, MN 56001  
PHONE: 507.387.6651  
FAX: 507.387.3583  
PROJECT MANAGER: CHUCK BRANDEL  
EMAIL: CHUCK.BRANDEL@IS-GRP.COM

SPECIFICATIONS REFERENCE

ALL CONSTRUCTION SHALL COMPLY WITH THE COUNTY OF FARIBAULT REQUIREMENTS AND MnDOT STANDARD SPECIFICATIONS FOR CONSTRUCTION, 2016 EDITION, AND THE STANDARD SPECIFICATIONS FOR SANITARY SEWER, STORM DRAIN AND WATERMAIN AS PROPOSED BY THE CITY ENGINEERS ASSOCIATION OF MINNESOTA 2013, UNLESS DIRECTED OTHERWISE.

PROJECT DATUM

HORIZONTAL COORDINATES HAVE BEEN REFERENCED TO THE NORTH AMERICAN DATUM OF 1983 (NAD83), 1996 ADJUSTMENT (NAD83(1996)) ON THE FARIBAULT COUNTY COORDINATE SYSTEM, IN U.S. SURVEY FEET.  
ELEVATIONS HAVE BEEN REFERENCED TO THE NORTH AMERICAN VERTICAL DATUM OF 1988 (NAVD 88).  
RTK GPS METHODS WERE USED TO ESTABLISH HORIZONTAL AND VERTICAL COORDINATES FOR THIS PROJECT.

TOPOGRAPHIC SURVEY

THIS PROJECTS TOPOGRAPHIC SURVEY CONSISTS OF DATA COLLECTED ON DECEMBER/ 2016 BY ISG.

B.M. ELEVATION=1063.98

1.2 MILES EAST OF EASTON, 45 FEET WEST OF COUNTY ROAD 113, 1.6 FEET NORTH OF WITNESS POST, MNDOT MONUMENT

KEY PLAN

I HEREBY CERTIFY THAT THIS PLAN, SPECIFICATION, OR REPORT WAS PREPARED BY ME OR UNDER MY DIRECT SUPERVISION AND THAT I AM A DULY LICENSED PROFESSIONAL ENGINEER UNDER THE LAWS OF THE STATE OF MINNESOTA.  
CHARLES J. BRANDEL  
*Charles J. Brandel*  
DATE: 6-21-21 LIC. NO. 43359

AS-BUILT  
06/21/2021

THIS DOCUMENT IS THE PROPERTY OF I & S GROUP, INC. AND MAY NOT BE USED, COPIED OR DUPLICATED WITHOUT PRIOR WRITTEN CONSENT.

PROJECT

FARIBAULT COUNTY  
COUNTY DITCH 20

FARIBAULT COUNTY MINNESOTA

REVISION SCHEDULE

DATE	DESCRIPTION	BY
2-12-18	ADDENDUM #1	FPS
2-22-18	ADDENDUM #2	KDS

PROJECT NO. 16-19916

CAD FILE NAME 19916-TITLE

DRAWN BY FS

DESIGNED BY RAG

REVIEWED BY CJB

ORIGINAL ISSUE DATE --/--

CLIENT PROJECT NO. -

TITLE

TITLE

SHEET

1 OF 19





KEY PLAN

I HEREBY CERTIFY THAT THIS PLAN, SPECIFICATION, OR REPORT WAS PREPARED BY ME OR UNDER MY DIRECT SUPERVISION AND THAT I AM A DULY LICENSED PROFESSIONAL ENGINEER UNDER THE LAWS OF THE STATE OF MINNESOTA.

CHARLES J. BRANDEL

*Charles J. Brandel*

DATE 6-21-21 LIC. NO. 43359

AS-BUILT  
06/21/2021

THIS DOCUMENT IS THE PROPERTY OF I & S GROUP, INC. AND MAY NOT BE USED, COPIED OR DUPLICATED WITHOUT PRIOR WRITTEN CONSENT.

PROJECT

FARIBAULT  
COUNTY

COUNTY DITCH 20

FARIBAULT COUNTY MINNESOTA

REVISION SCHEDULE		
DATE	DESCRIPTION	BY
2-12-18	ADDENDUM #1	FPS
2-22-18	ADDENDUM #2	KDS

PROJECT NO.	16-19916
CAD FILE NAME	19916-TITLE
DRAWN BY	FS
DESIGNED BY	RAG
REVIEWED BY	CJB
ORIGINAL ISSUE DATE	--/--
CLIENT PROJECT NO.	-

TITLE

NOTES &  
QUANTITIES

SHEET

GENERAL OPEN DITCH NOTES:

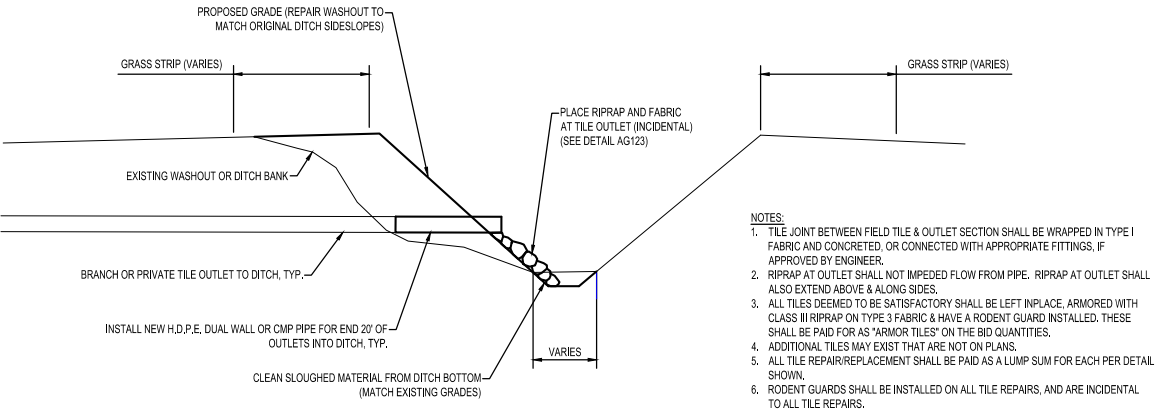
- DURING CONSTRUCTION, CONTRACTOR SHALL MAINTAIN A DRAINAGE OUTLET FOR THE ENTIRE FARIBAULT CD 20 SYSTEM.
- AREAS WHERE A 16.5-FOOT GRASS STRIP DOES NOT EXIST OR HAS BEEN DISTURBED DURING CONSTRUCTION SHALL BE SEEDED AFTER ALL WORK HAS BEEN COMPLETED IN THAT AREA, & SHALL COMPLY TO SPECIFICATIONS OUTLINED IN THE SPEC BOOK. THESE AREAS WILL BE DETERMINED BY THE ENGINEER.
- UNLESS OTHERWISE NOTED, CONTRACTOR SHALL LIMIT CONSTRUCTION ACTIVITY TO WITHIN A 33-FOOT WIDE BUFFER AREA ALONG PROPOSED DITCH ALIGNMENTS, DISTURBANCE THROUGH ROAD CROSSINGS, ROAD DITCHES, AND GRASS BUFFERS SHALL BE LIMITED TO THE WIDTH OF A TRENCH NECESSARY FOR SAFE CONSTRUCTION PRACTICES.
- ALL EFFORTS SHALL BE MADE DURING CONSTRUCTION TO SEPARATE SOIL TYPES. TOP SOIL SHALL BE REPLACED BACK ON TOP OF COMPACTED BACKFILL AND TOP TWO (2) FEET SHALL BE LEFT UNCOMPACTED AS MUCH AS POSSIBLE. EXCAVATED SPOILS SHALL BE SPREAD EVENLY IN CONSTRUCTION AREA AS TO NOT IMPEDE DRAINAGE. ALL EFFORTS SHALL BE MAKE TO KEEP TOPSOIL ON TOP.
- PLACE ALL SPOILS FROM DITCH CLEANING ON LOWER SIDE OF THE DITCH NO WIDER THAN 16.5-FOOT WIDE FROM TOP OF SLOPE UNLESS OTHERWISE DETERMINED BY THE ENGINEER. SPOIL LEVELING/GRADING IS INCIDENTAL TO OPEN DITCH CLEANING.
- TOP SOIL IN SPOIL AREAS DESIGNATED ON THE PLANS, SHALL BE STRIPPED PRIOR TO SPOIL PLACEMENT.
- MINOR SHAPING AROUND SIDE INTAKES, ALTERNATIVE SIDE INTAKES AND CULVERT INLETS SHALL BE INCIDENTAL TO THESE RESPECTIVE PAY ITEMS.
- EXISTING TILES AT OUTLETS MAY BE SALVAGED, REUSED, & PROTECTED WITH RIPRAP IF THE OUTLET IS DEEMED IN GOOD SHAPE, BY THE ENGINEER. TILE REPAIR AT THESE LOCATIONS SHALL BE PAID FOR AS BID ITEM "ARMOR TILE."
- ANY EXISTING DITCH TILES IN OPEN DITCH, INCLUDING ANY NOT ON PLANS, SHALL BE REPAIRED WITH RIPRAP, GEOTEXTILE FABRIC, RODENT GUARD, AND 20 LF OF SPECIFIED PIPE SIZE WHERE NEEDED. UNLESS SPECIFICALLY NOTED, HDPE WILL BE ACCEPTABLE MATERIAL FOR ALL TILE REPAIRS. (SEE DETAIL AG121)
- ANY ROAD CROSSING REPAIRS SHALL BE CLASS III RCP ONLY, UNLESS SPECIFIED ON PLANS OR APPROVED BY THE ENGINEER. TIE ALL PIPE SECTIONS UNDER ROAD CROSSINGS (INCIDENTAL).
- MISC. TREE CLEARING OUTSIDE OF CALLED OUT AREAS ON THE PLANS SHALL BE INCIDENTAL TO NORMAL DITCH CLEANING.
- TREES LARGER THAN 6" IN DIAMETER CALLED OUT ON PLANS SHALL PAID FOR AS BID ITEM "CLEAR AND GRUB TREES (OVER 6")"
- UNLESS SPECIFICALLY NOTED HDPE & PVC WILL BE ACCEPTABLE MATERIALS FOR ALL TILE REPAIRS
- ALL TREE REMOVALS MUST BE COMPLETED BY MAY 3 2018. ALL TREES MUST BE CUT AS LOW AS POSSIBLE TO THE GROUND, BUT DO NOT NEED TO BE FULLY GRUBBED. TREE CLEARING INCLUDES DITCH BANK BUFFER STRIP AREA NEEDED FOR SAFE CONSTRUCTION (PER LINEAR-FOOT OF DITCH)
- ALL SIGNAGE FOR WORK NEAR ROAD WAYS OR ROAD CROSSING SHALL BE INCIDENTAL
- PROTECT & ARMOR CULVERT INCLUDES RIPRAP ON TYPE IV FUTURE AND SHALL BE PAID FOR BY CY OF RIPRAP, FABRIC & GRADING ARE INCIDENTAL

BASE BID QUANTITIES			
Item Code	Item	Unit	Quantity
2021.501	MOBILIZATION	LS	1
2101.511	TREE CLEARING AND HEAVY VEGETATION REMOVAL	LF	1600
2101.511	CLEAR AND GRUB TREE (OVER 6")	EA	0
2105.602	RESOTRE GRAVEL ROAD OR DRIVEWAY	EA	1
2105.603	DITCH CLEANING (6' WIDE DITCH BOTTOM)	LF	3990.00
2105.603	DITCH CLEANING (4' WIDE DITCH BOTTOM)	LF	21880
2105.603	SLOUGH REPAIR	LF	2867
2106.501	TOP SOIL STRIPPING	LF	9350
2412.511	PROTECT AND ARMOR CULVERT CROSSING	EA	2
2506.502	INSTALL 24-INCH ASI RISER ASSEMBLY W/TRASH GRATE	EA	4
2506.502	INSTALL 15-INCH ASI RISER ASSEMBLY W/TRASH GRATE	EA	1
2506.502	INSTALL 12-INCH ASI RISER ASSEMBLY W/TRASH GRATE	EA	2
2506.502	INSTALL 10-INCH ASI RISER ASSEMBLY W/TRASH GRATE	EA	0
2506.502	INSTALL 10-INCH ASI RISER ASSEMBLY W/STANDARD HICKENBOTTOM	EA	2
2506.502	INSTALL 8-INCH ASI RISER ASSEMBLY W/TRASH GRATE	EA	1
2506.502	INSTALL 24-INCH ASI OUTLET ASSEMBLY	EA	4
2506.502	INSTALL 15-INCH ASI OUTLET ASSEMBLY	EA	1
2506.502	INSTALL 12-INCH ASI OUTLET ASSEMBLY	EA	2
2506.502	INSTALL 10-INCH ASI OUTLET ASSEMBLY	EA	2
2506.502	INSTALL 8-INCH ASI OUTLET ASSEMBLY	EA	1
2506.603	66-INCH TILE OUTLET (20 LF OF PIPE & RIPRAP ON GEOTEXTILE FABRIC)	EA	0
2506.603	36-INCH TILE OUTLET (20 LF OF PIPE & RIPRAP ON GEOTEXTILE FABRIC)	EA	0
2506.603	30-INCH TILE OUTLET (20 LF OF PIPE & RIPRAP ON GEOTEXTILE FABRIC)	EA	0
2506.603	24-INCH TILE OUTLET (20 LF OF PIPE & RIPRAP ON GEOTEXTILE FABRIC)	EA	1
2506.603	18-INCH TILE OUTLET (20 LF OF PIPE & RIPRAP ON GEOTEXTILE FABRIC)	EA	2
2506.603	15-INCH TILE OUTLET (20 LF OF PIPE & RIPRAP ON GEOTEXTILE FABRIC)	EA	9
2506.603	12-INCH TILE OUTLET (20 LF OF PIPE & RIPRAP ON GEOTEXTILE FABRIC)	EA	14
2506.603	10-INCH TILE OUTLET (20 LF OF PIPE & RIPRAP ON GEOTEXTILE FABRIC)	EA	11
2506.603	8-INCH TILE OUTLET (20 LF OF PIPE & RIPRAP ON GEOTEXTILE FABRIC)	EA	7
2506.603	6-INCH TILE OUTLET (20 LF OF PIPE & RIPRAP ON GEOTEXTILE FABRIC)	EA	5
2506.603	ARMOR TILE OUTET (RIPRAP & GEOTEXTILE FABRIC)	EA	44
2506.502	CLASS III RIPRAP WITH GEOTEXTILE FABRIC	CY	117
2573.502	INSTALL PERIMETER CONTROL	LF	0
2575.501	16.5' BUFFER STRIP SEEDING(SEED MIX: BUFFER BLEND WITH TYPE 3 MULCH)	AC	0
2575.501	STANDARD SIDESLOPE SEEDING (SEED MIX: BUFFER BLEND WITH BFM)	AC	1.06
2575.541	BUFFER STRIP MOWING	AC	0
2575.545	TREE SPRAYING	AC	0
2575.545	WEED SPRAYING	AC	0

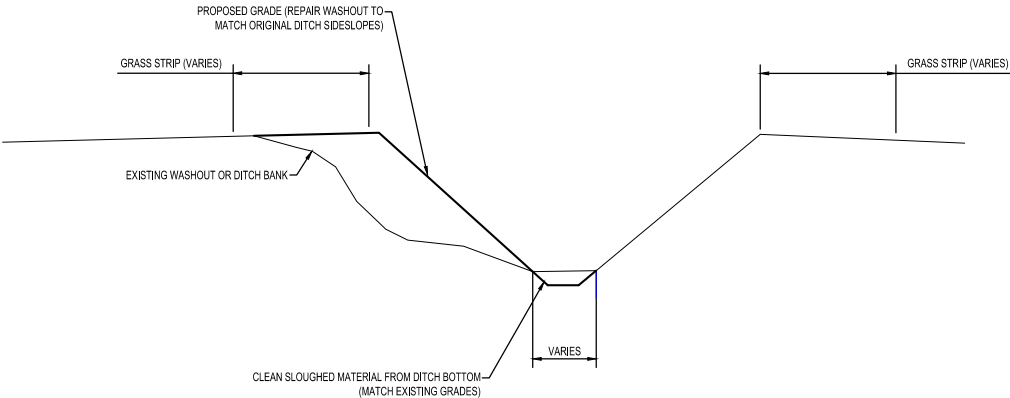




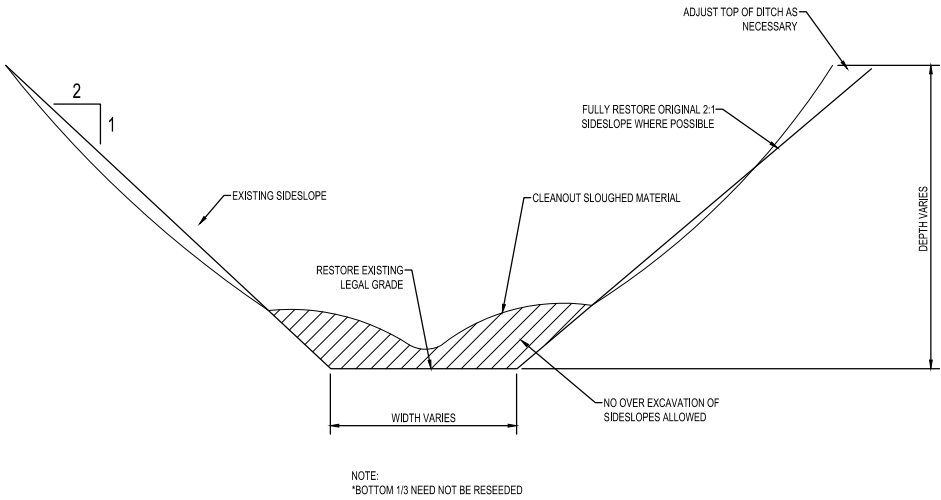
NOTE: ALL TILE OUTLETS AND FIELD INTAKES SHALL BE REPAIRED OR PROTECTED



TYPICAL TILE OUTLET REPAIR  
NTS AG440

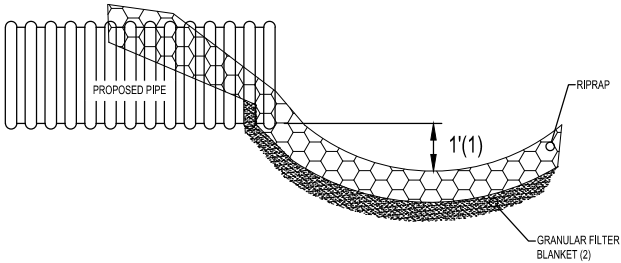


TYPICAL SLOUGH REPAIR  
NTS AG430



TYPICAL DITCH CLEANING  
NTS AG410

- NOTES:  
REQUIREMENTS FOR RIPRAP SIZE AND THICKNESS WILL BE DESIGNATED IN THE PLANS
1. FOR PIPES GREATER THAN OR EQUAL TO 30", USE 1.5'-2'
  2. THE CONTRACTOR, AT HIS OPTION, MAY SUBSTITUTE A GEOTEXTILE FABRIC, SPEC. 3601 FOR THE GRANULAR FILTER BLANKET. THE FABRIC SHOULD COVER THE FILTER BLANKET. THE FABRIC SHOULD COVER THE PIPE BY 3'.



TYPICAL TILE OUTLET  
NTS AG530

DIMENSIONS	
PIPE DIA.	RIPRAP
12" TO 18"	4 CY CLASS III
21" TO 27"	8 CY CLASS III
30" TO 36"	12 CY CLASS III
42" TO 48"	16 CY CLASS III
54" & UP	20 CY CLASS IV

KEY PLAN

I HEREBY CERTIFY THAT THIS PLAN, SPECIFICATION, OR REPORT WAS PREPARED BY ME OR UNDER MY DIRECT SUPERVISION AND THAT I AM A DULY LICENSED PROFESSIONAL ENGINEER UNDER THE LAWS OF THE STATE OF MINNESOTA.

CHARLES J. BRANDEL  
*Charles J. Brandel*  
DATE 6-21-21 LIC. NO. 43359

AS-BUILT  
06/21/2021

THIS DOCUMENT IS THE PROPERTY OF I & S GROUP, INC. AND MAY NOT BE USED, COPIED OR DUPLICATED WITHOUT PRIOR WRITTEN CONSENT.

PROJECT

FARIBAULT COUNTY  
COUNTY DITCH 20

FARIBAULT COUNTY MINNESOTA

REVISION SCHEDULE		
DATE	DESCRIPTION	BY

PROJECT NO.	16-19916
CAD FILE NAME	19916-DETAILS
DRAWN BY	FS
DESIGNED BY	RAG
REVIEWED BY	CJB
ORIGINAL ISSUE DATE	-/-/-
CLIENT PROJECT NO.	-

TITLE

DETAILS

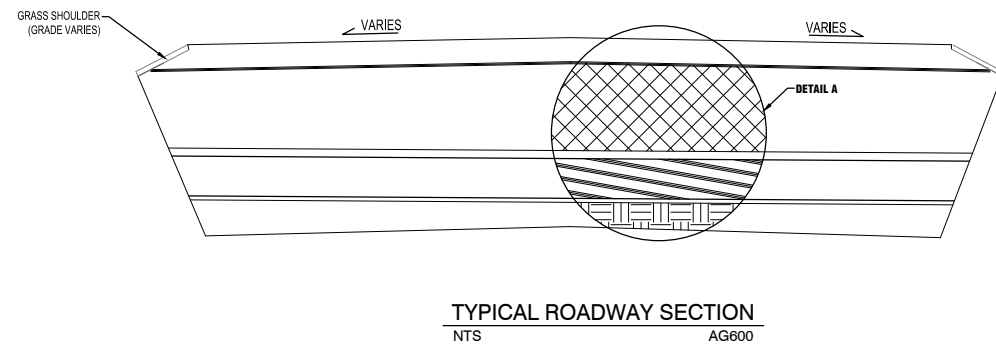
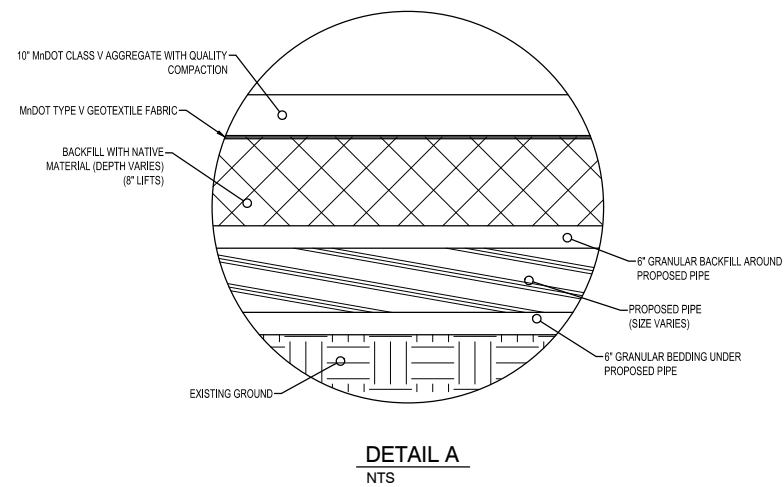
SHEET





NOTES:

1. ADDITIONAL CLASS III AGGREGATE MAY BE NEEDED TO MEET MINIMUM 10" DEPTH.
2. SEED DISTURBED GRASS SHOULDER WITH MnDOT 25-142 WITH MnDOT CATEGORY 3 EROSION CONTROL BLANKET.



### KEY PLAN

I HEREBY CERTIFY THAT THIS PLAN, SPECIFICATION, OR REPORT WAS PREPARED BY ME OR UNDER MY DIRECT SUPERVISION AND THAT I AM A DULY LICENSED PROFESSIONAL ENGINEER UNDER THE LAWS OF THE STATE OF MINNESOTA.

CHARLES J. BRANDEL

DATE 6-21-21 LIC. NO. 43359

**AS-BUILT**  
**06/21/2021**

THIS DOCUMENT IS THE PROPERTY OF I & S GROUP, INC.  
AND MAY NOT BE USED, COPIED OR DUPLICATED  
WITHOUT PRIOR WRITTEN CONSENT.

PROJECT

# FARIBAULT COUNTY

## COUNTY DITCH 20

FARIBAULT COUNTY MINNESOTA

[illegible]

PROJECT NO.	16-19916
CAD FILE NAME	19916-DETAILS
DRAWN BY	FS
DESIGNED BY	RAG
REVIEWED BY	CJB
ORIGINAL ISSUE DATE	--/--/--
CLIENT PROJECT NO.	-

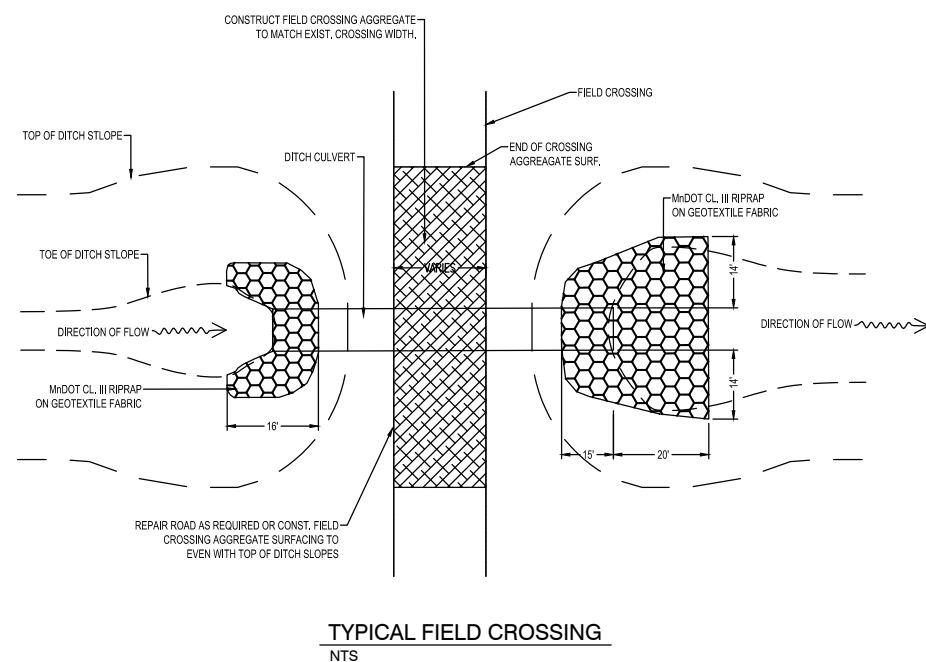
TITLE

## DETAILS

SHEET

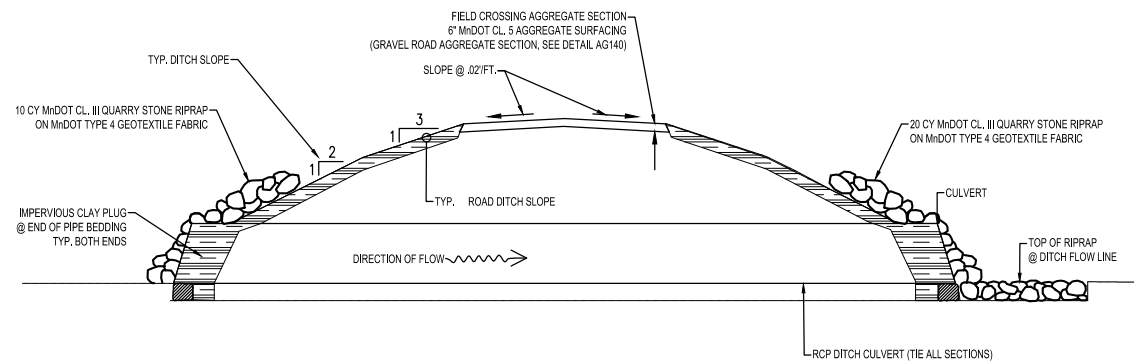
**4**

OF 18



**NOTES:**

1. OPEN DITCH CULVERTS MUST BE WATERTIGHT, GASKETED, AND TONGUE AND GROOVE DESIGN. CONFORM TO MnDOT 3006F.
2. SEE TYPICAL ROAD SECTION DETAIL (AG-140)
3. GRAVEL ROAD RESTORATION PAID SEPARATE TO CULVERT RESTORATION.
4. AGGREGATE SURFACE IS INCIDENTAL TO CROSSING OR ROAD RESTORATION.
5. THE ALL RCP PIPE SECTIONS (INCIDENTAL TO CROSSING)
6. EXCAVATE MINIMAL 12" BELOW LEGAL GRADE OR BOTTOM OF UNSUITABLE SOIL, WHICHEVER IS GREATER. BACKFILL WITH AGGREGATE BEDDING (INCIDENTAL TO CULVERT)
7. A 2'-0" OF CAP SHALL BE CONSTRUCTED ON ALL CULVERT ENDS (NEW OR LOWERED) IN THE ENTIRE TRENCH AROUND THE CULVERTS/APRONS' END BARRELS TO PREVENT SEEPAGE THROUGH THE CROSSING (INCIDENTAL).
8. EROSION CONTROL BLANKET SHALL BE PLACED WITH ALL SEEDING



TYPICAL GRAVEL ROAD AND FIELD CROSSING SECTION



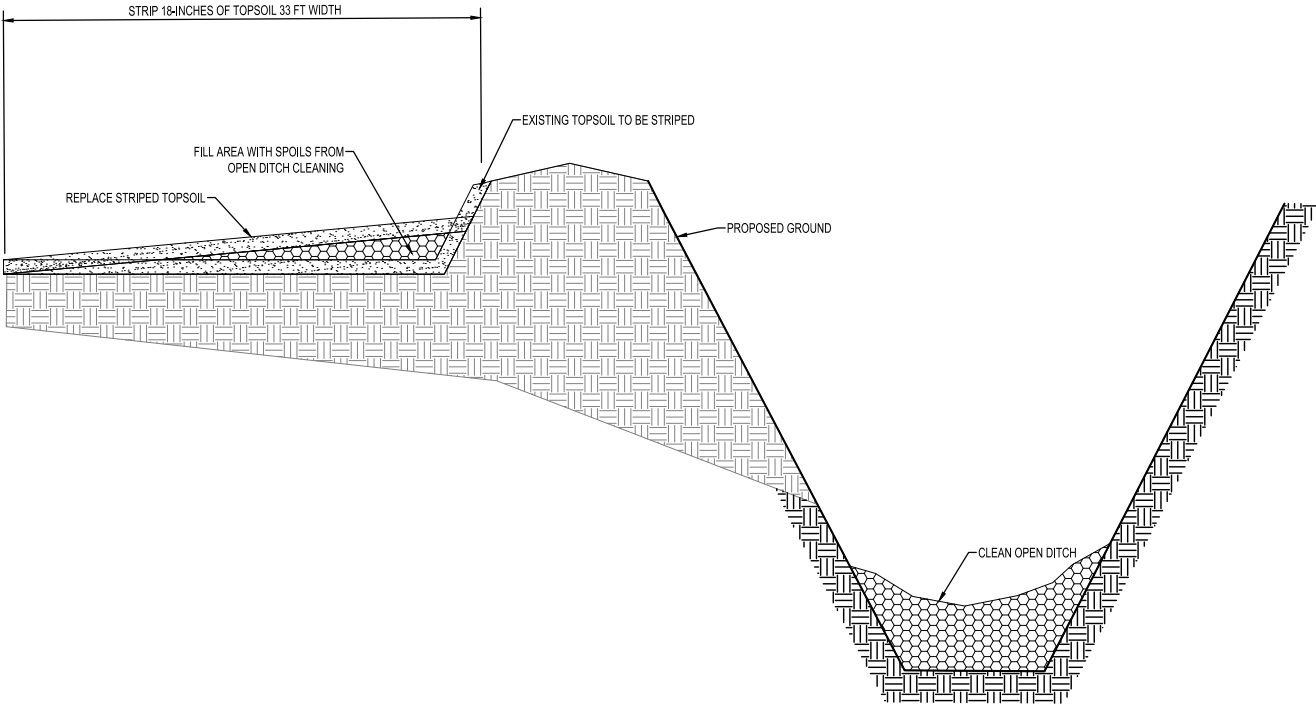


**ALTERNATIVE SIDE INLET WITH RIPRAP OVERFLOW (ASIRO)**  
NTS AG350





- NOTES:
1. TOPSOIL AREAS SHALL BE FIELD ADJUSTED BASED ON ACTUAL LOCATION OF BERMS, AS DETERMINED BY THE ENGINEER.
  2. HEIGHT WILL VARY DEPENDING ON LOCATION, SEE PLAN AND PROFILE
  3. WHERE ASI OR ASIRO IS CALLED OUT ON PLAN, ENSURE POSITIVE DRAINAGE TOWARDS INTAKE
  4. MAINTAIN EXISTING SIDE SLOPES



KEY PLAN

I HEREBY CERTIFY THAT THIS PLAN, SPECIFICATION, OR REPORT WAS PREPARED BY ME OR UNDER MY DIRECT SUPERVISION AND THAT I AM A DULY LICENSED PROFESSIONAL ENGINEER UNDER THE LAWS OF THE STATE OF MINNESOTA.

CHARLES J. BRANDEL

DATE 6-21-21 LIC. NO. 43359

**AS-BUILT**  
**06/21/2021**

THIS DOCUMENT IS THE PROPERTY OF I & S GROUP, INC. AND MAY NOT BE USED, COPIED OR DUPLICATED WITHOUT PRIOR WRITTEN CONSENT.

PROJECT

**FARIBAULT  
COUNTY**

**COUNTY DITCH 20**

FARIBAULT COUNTY MINNESOTA

REVISION SCHEDULE

DATE	DESCRIPTION	BY

PROJECT NO.	16-19916
CAD FILE NAME	19916-DETAILS
DRAWN BY	FS
DESIGNED BY	RAG
REVIEWED BY	CJB
ORIGINAL ISSUE DATE	--/--
CLIENT PROJECT NO.	-

TITLE

**DITCH CLEANING  
DETAILS & ASI  
QUANTITIES**

SHEET

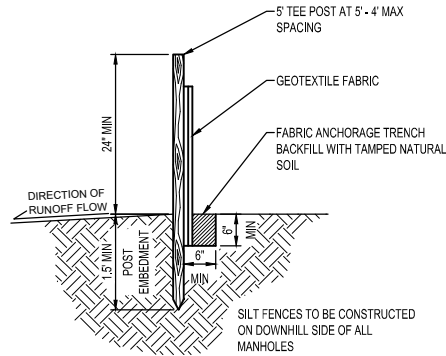
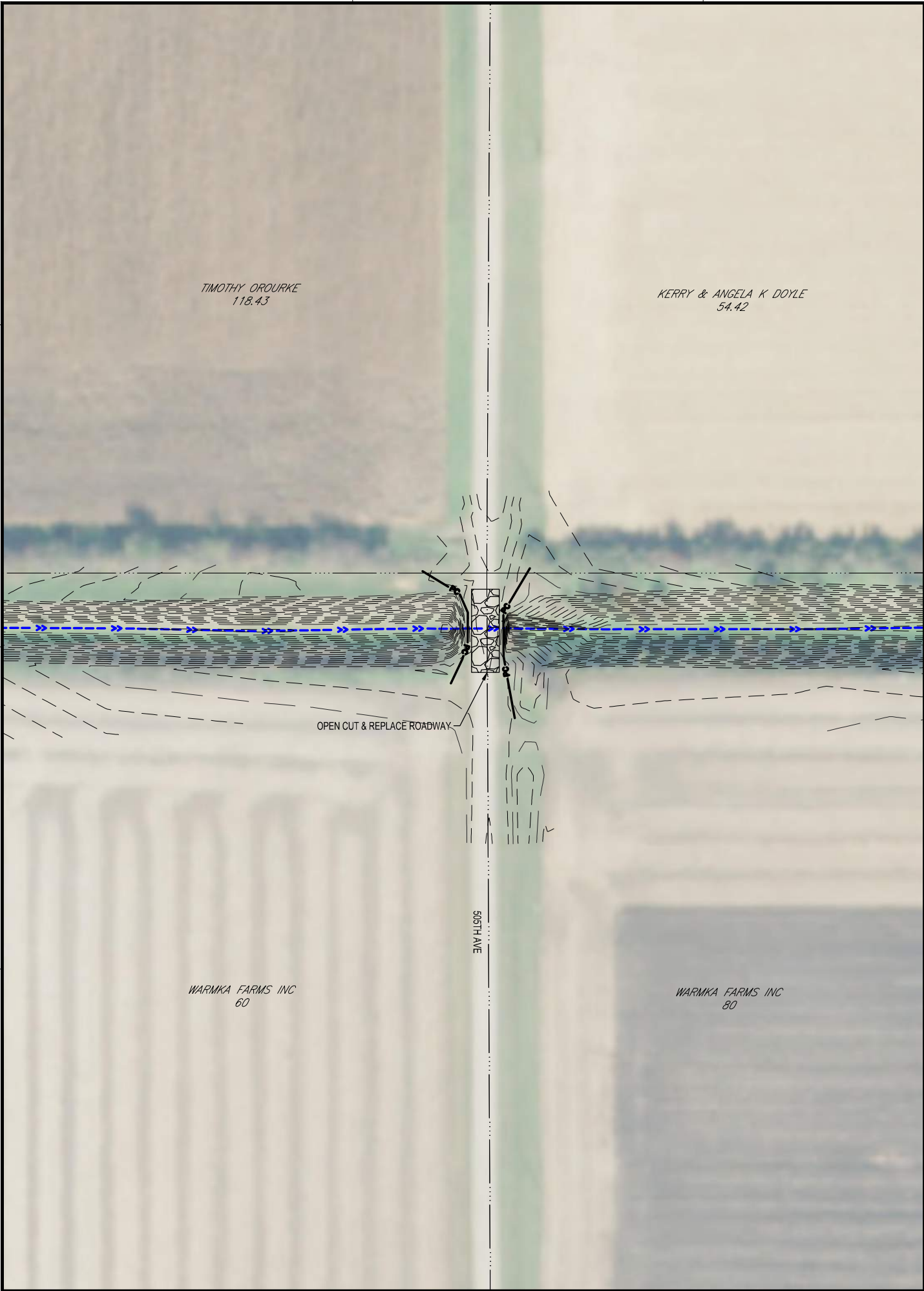
**6**

OF 18

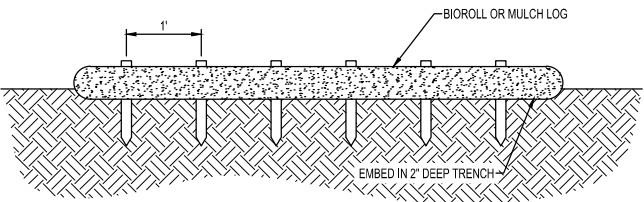
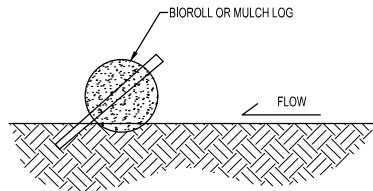
ALTERNATIVE SIDE INLET (ASI)								
Description			Bid Item			Bid Item		
ID	BRANCH (LOCATION)	STATION	INTAKE TYPE	RISER SIZE (in)	RISER DEPTH (LF)	OUTLET SIZE (in)	OUTLET LENGTH (LF)	OUTLET GRADE (%)
ASI-6	MAIN	68+20	TRA5H GRATE	12	11.5	12	30	1.0%
ASI-7	MAIN	86+90	TRA5H GRATE	8	10.5	8	30	1.0%
ASI-14	MAIN	59+87	STANDARD HICKENBOTTOM	10	12	10	30	2.0%
ASI-1A	MAIN	78+30	TRA5H GRATE	15	9	15	30	2.00%
ASI-4A	MAIN	114+10	TRA5H GRATE	10	11	10	30	2.00%
ASI-11A	MAIN	178+45	TRA5H GRATE	24	16	24	30	2.00%
ASI-12A	MAIN	175+40	TRA5H GRATE	12	14	12	30	2.00%

ALTERNATIVE SIDE INLET W/RIPRAP (ASIRO)									
Description			Bid Item			Bid Item			Bid Item
ID	BRANCH (LOCATION)	STATION	INTAKE TYPE	RISER SIZE (in)	RISER DEPTH (LF)	OUTLET SIZE (in)	OUTLET LENGTH (LF)	OUTLET GRADE (%)	RIPRAP (CY)
ASIRO-7A	MAIN	144+50	TRASH GRATE	24	10	24	30	2.00%	10



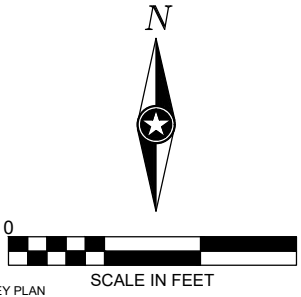


**SILT FENCE**  
NTS EC100



- NOTES:**
- BIOROLL/MULCH LOGS TO BE 6" DIAMETER UNLESS OTHERWISE NOTED.
  - STAKED INTO THE GROUND WITH WOOD STAKES.
  - WOOD STAKES ARE A MINIMUM OF 2"x16"x1/2" UNLESS PRECLUDED BY PAVED SURFACE OR ROCK.
  - WOOD STAKES DRIVEN THROUGH BACK HALF OF BIOROLL OR WOOD MULCH LOG AT AN APPROXIMATE ANGLE OF 45° WITH THE TOP OF STAKE POINTING UP STREAM.
  - WHEN MORE THAN ONE BIOROLL IS NEEDED, OVERLAP ENDS A MINIMUM OF 6" AND STAKE

**BIOROLL STAKING**  
NTS EC300



I HEREBY CERTIFY THAT THIS PLAN, SPECIFICATION, OR REPORT WAS PREPARED BY ME OR UNDER MY DIRECT SUPERVISION AND THAT I AM A DULY LICENSED PROFESSIONAL ENGINEER UNDER THE LAWS OF THE STATE OF MINNESOTA.

CHARLES J. BRANDEL

DATE 6-21-21 LIC. NO. 43359

**AS-BUILT**  
**06/21/2021**

THIS DOCUMENT IS THE PROPERTY OF I & S GROUP, INC. AND MAY NOT BE USED, COPIED OR DUPLICATED WITHOUT PRIOR WRITTEN CONSENT.

PROJECT

**FARIBAULT COUNTY**

**COUNTY DITCH 20**

FARIBAULT COUNTY MINNESOTA

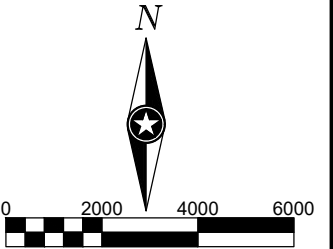
REVISION SCHEDULE		
DATE	DESCRIPTION	BY

PROJECT NO.	17-16-19916
CAD FILE NAME	19916-SWPPP
DRAWN BY	FS
DESIGNED BY	RAG
REVIEWED BY	CJB
ORIGINAL ISSUE DATE	--/--
CLIENT PROJECT NO.	-

TITLE

**EROSION CONTROL PLAN**





HEREBY CERTIFY THAT THIS PLAN, SPECIFICATION, OR REPORT WAS PREPARED BY ME OR UNDER MY DIRECT SUPERVISION AND THAT I AM A DULY LICENSED PROFESSIONAL ENGINEER UNDER THE LAWS OF THE STATE OF MINNESOTA.

Chris T. Bode

**AS-BUILT**  
**06/21/2021**

PROJECT

**FARIBAULT  
COUNTY**

**COUNTY DITCH 20**

FARIBAULT COUNTY MINNESOTA

[illegible]

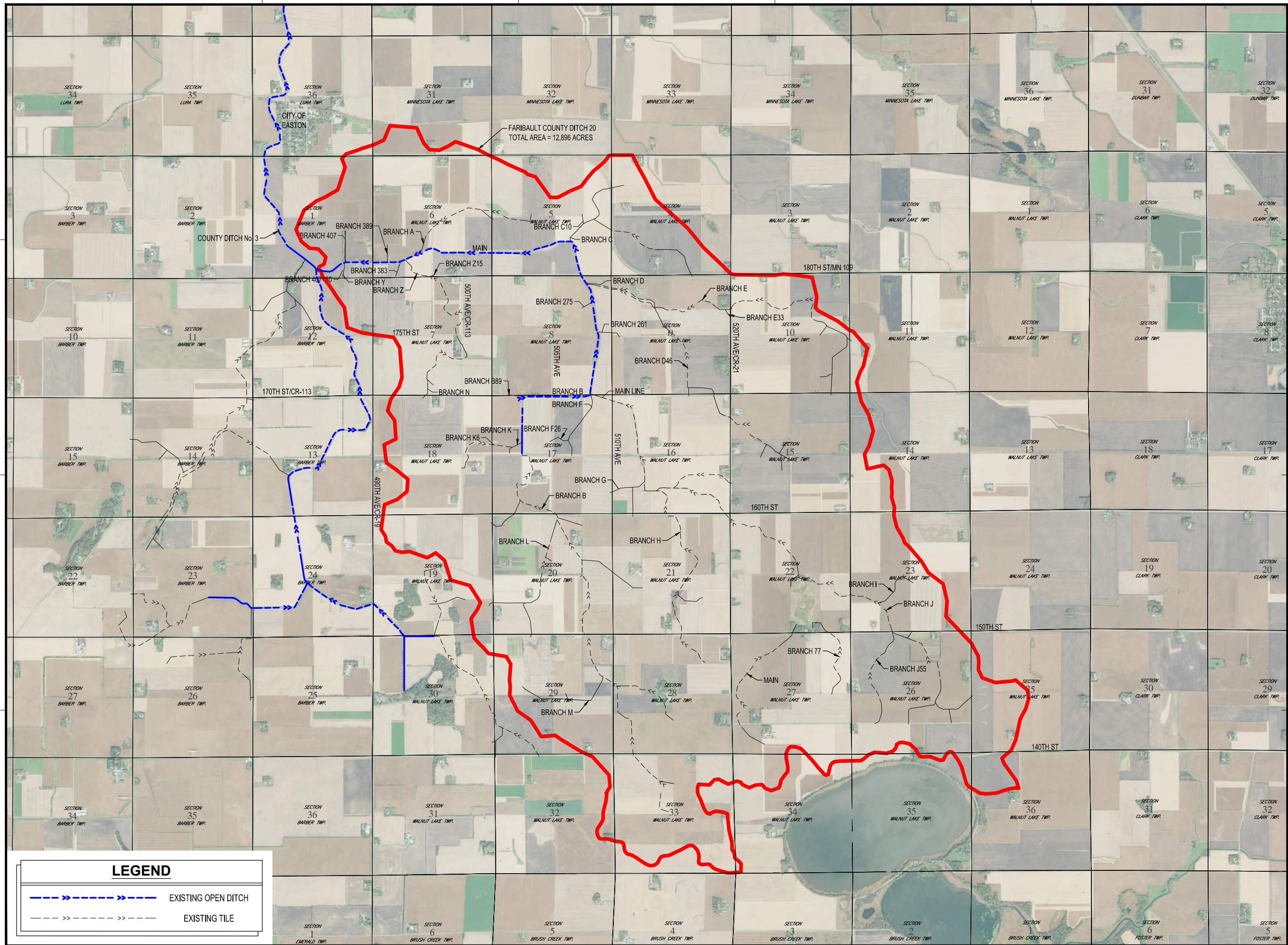
PROJECT NO.	16-19916
CAD FILE NAME	19916-TITLE
DRAWN BY	FS
DESIGNED BY	RAG
REVIEWED BY	CJB
ORIGINAL ISSUE DATE	--/--/--
CLIENT PROJECT NO.	-

## EXISTING WATERSHED

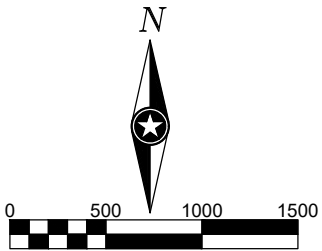
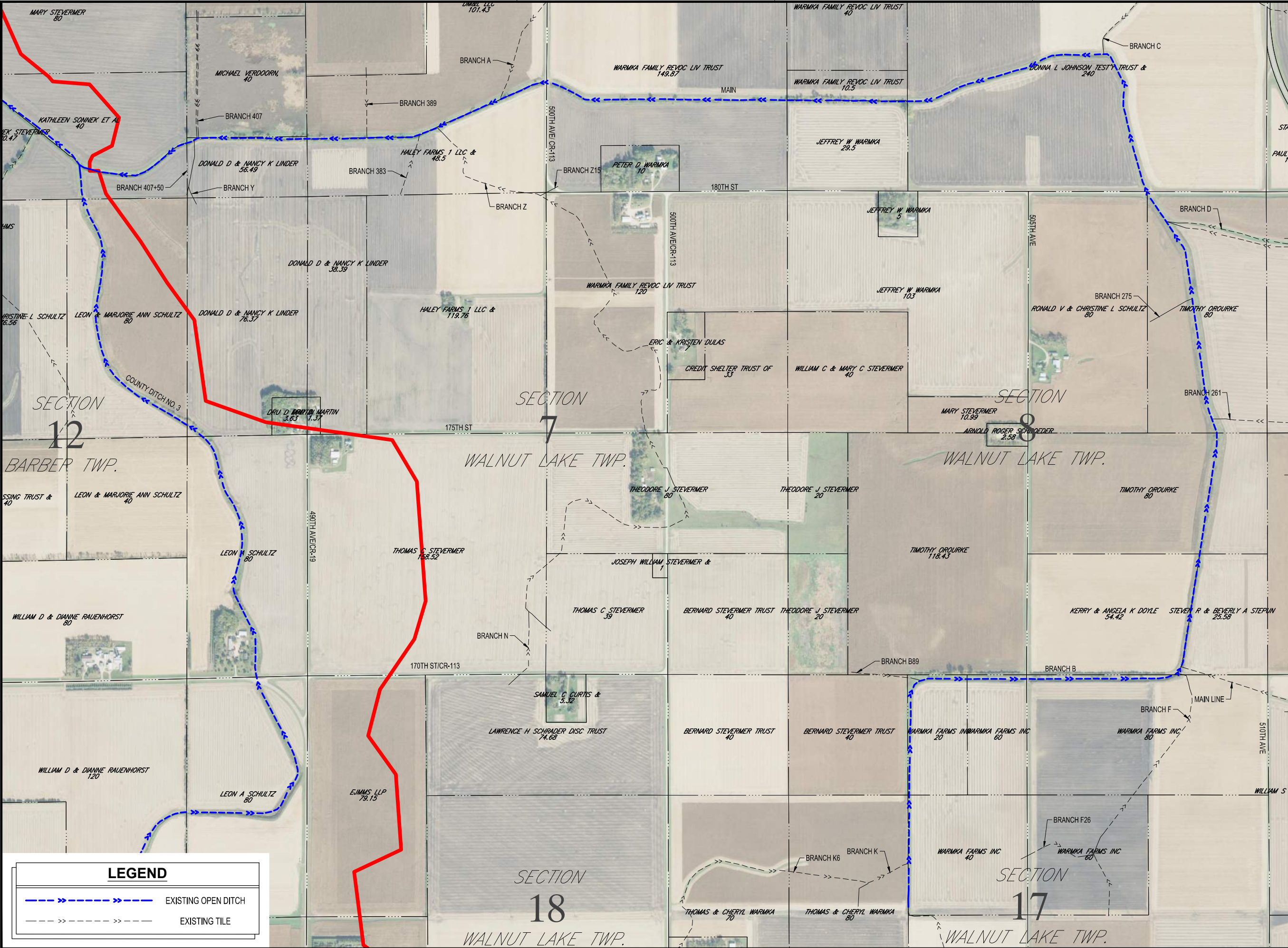
HEET

**8**

OF 19







KEY PLAN Scale in Feet

I HEREBY CERTIFY THAT THIS PLAN, SPECIFICATION, OR REPORT WAS PREPARED BY ME OR UNDER MY DIRECT SUPERVISION AND THAT I AM A DULY LICENSED PROFESSIONAL ENGINEER UNDER THE LAWS OF THE STATE OF MINNESOTA.

CHARLES J. BRANDEL

DATE 6-21-21 LIC. NO. 43359

**AS-BUILT**  
**06/21/2021**

THIS DOCUMENT IS THE PROPERTY OF I & S GROUP, INC. AND MAY NOT BE USED, COPIED OR DUPLICATED WITHOUT PRIOR WRITTEN CONSENT.

PROJECT  
**FARIBAULT COUNTY**  
**COUNTY DITCH 20**

FARIBAULT COUNTY MINNESOTA

REVISION SCHEDULE		
DATE	DESCRIPTION	BY
2-12-18	ADDENDUM #1	FPS
2-22-18	ADDENDUM #2	KDS

PROJECT NO.	16-19916
CAD FILE NAME	19916-TITLE
DRAWN BY	FS
DESIGNED BY	RAG
REVIEWED BY	CJB
ORIGINAL ISSUE DATE	-/-/-
CLIENT PROJECT NO.	-

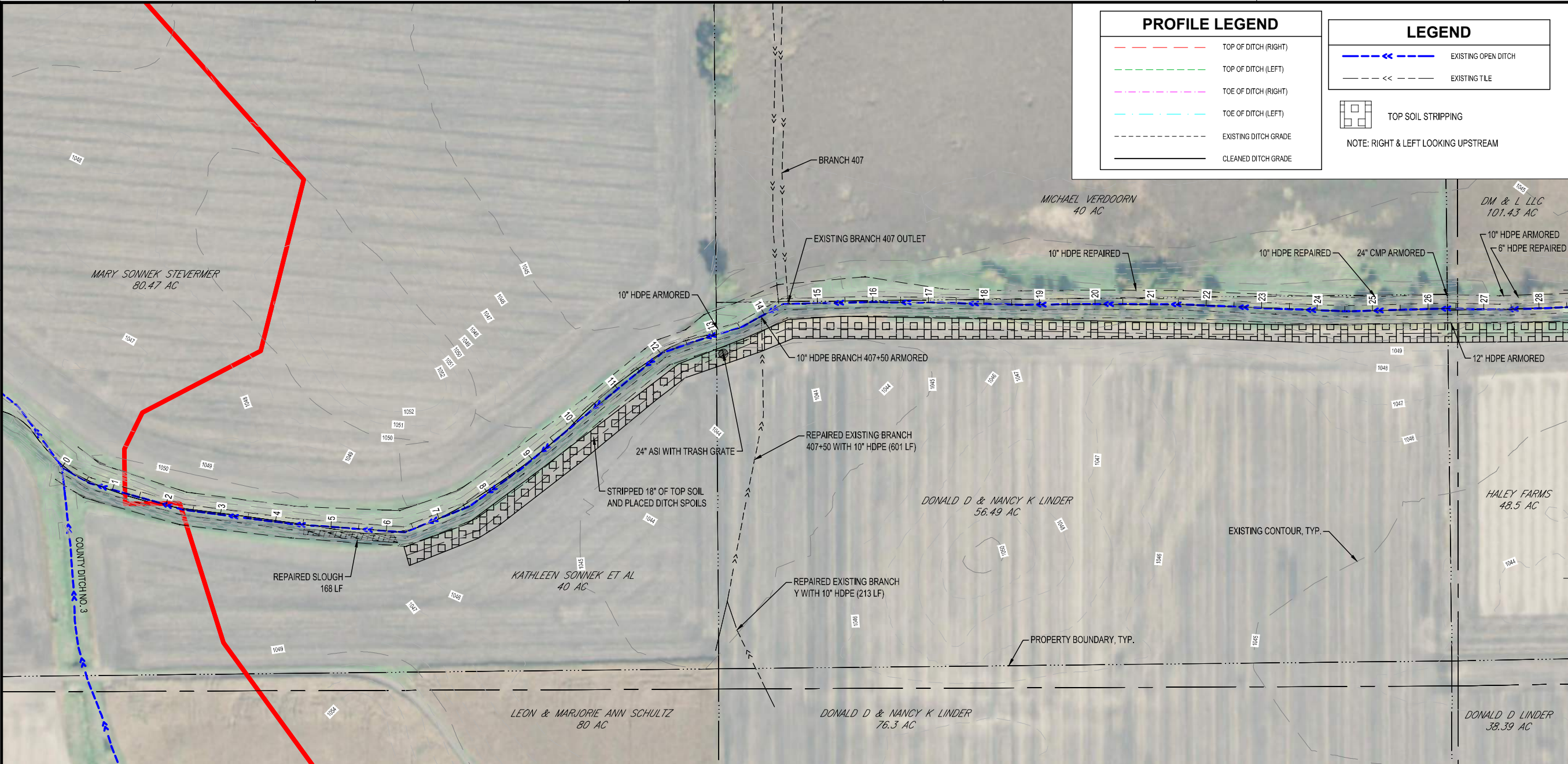
TITLE  
**EXISTING OPEN DITCH**

SHEET

**LEGEND**

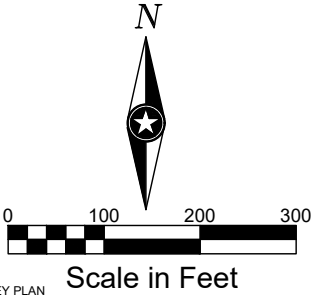
- EXISTING OPEN DITCH
- EXISTING TILE





PROFILE LEGEND	
	TOP OF DITCH (RIGHT)
	TOP OF DITCH (LEFT)
	TOE OF DITCH (RIGHT)
	TOE OF DITCH (LEFT)
	EXISTING DITCH GRADE
	CLEANED DITCH GRADE

LEGEND	
	EXISTING OPEN DITCH
	EXISTING TILE
	TOP SOIL STRIPPING
NOTE: RIGHT & LEFT LOOKING UPSTREAM	



I HEREBY CERTIFY THAT THIS PLAN, SPECIFICATION, OR REPORT WAS PREPARED BY ME OR UNDER MY DIRECT SUPERVISION AND THAT I AM A DULY LICENSED PROFESSIONAL ENGINEER UNDER THE LAWS OF THE STATE OF MINNESOTA.

CHARLES J. BRANDEL

DATE 6-21-21 LIC. NO. 43359

**AS-BUILT**  
**06/21/2021**

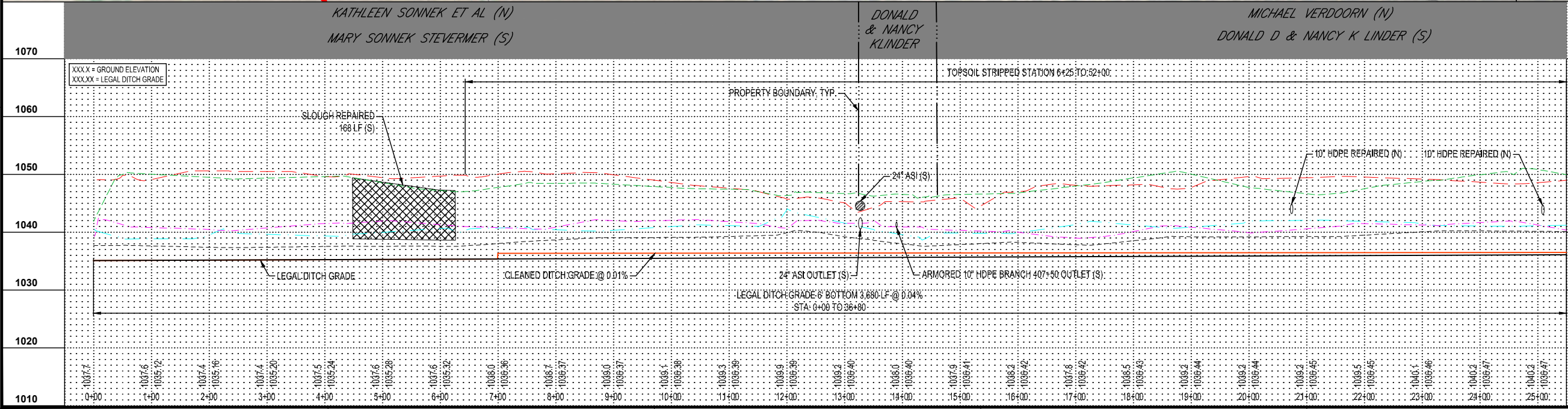
THIS DOCUMENT IS THE PROPERTY OF I & S GROUP, INC. AND MAY NOT BE USED, COPIED OR DUPLICATED WITHOUT PRIOR WRITTEN CONSENT.

PROJECT

**FARIBAULT COUNTY**

**COUNTY DITCH 20**

FARIBAULT COUNTY MINNESOTA



REVISION SCHEDULE		
DATE	DESCRIPTION	BY
2-12-18	ADDENDUM #1	FPS
2-22-18	ADDENDUM #2	KDS
9-10-18	ADDENDUM #3	LHH

PROJECT NO.	16-19916
CAD FILE NAME	19916-PLAN & PROFILE
DRAWN BY	AD
DESIGNED BY	RAG
REVIEWED BY	CJB
ORIGINAL ISSUE DATE	6-21-21
CLIENT PROJECT NO.	

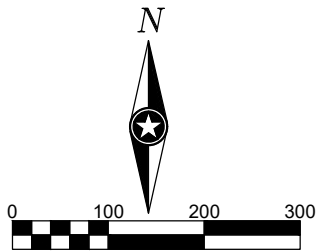
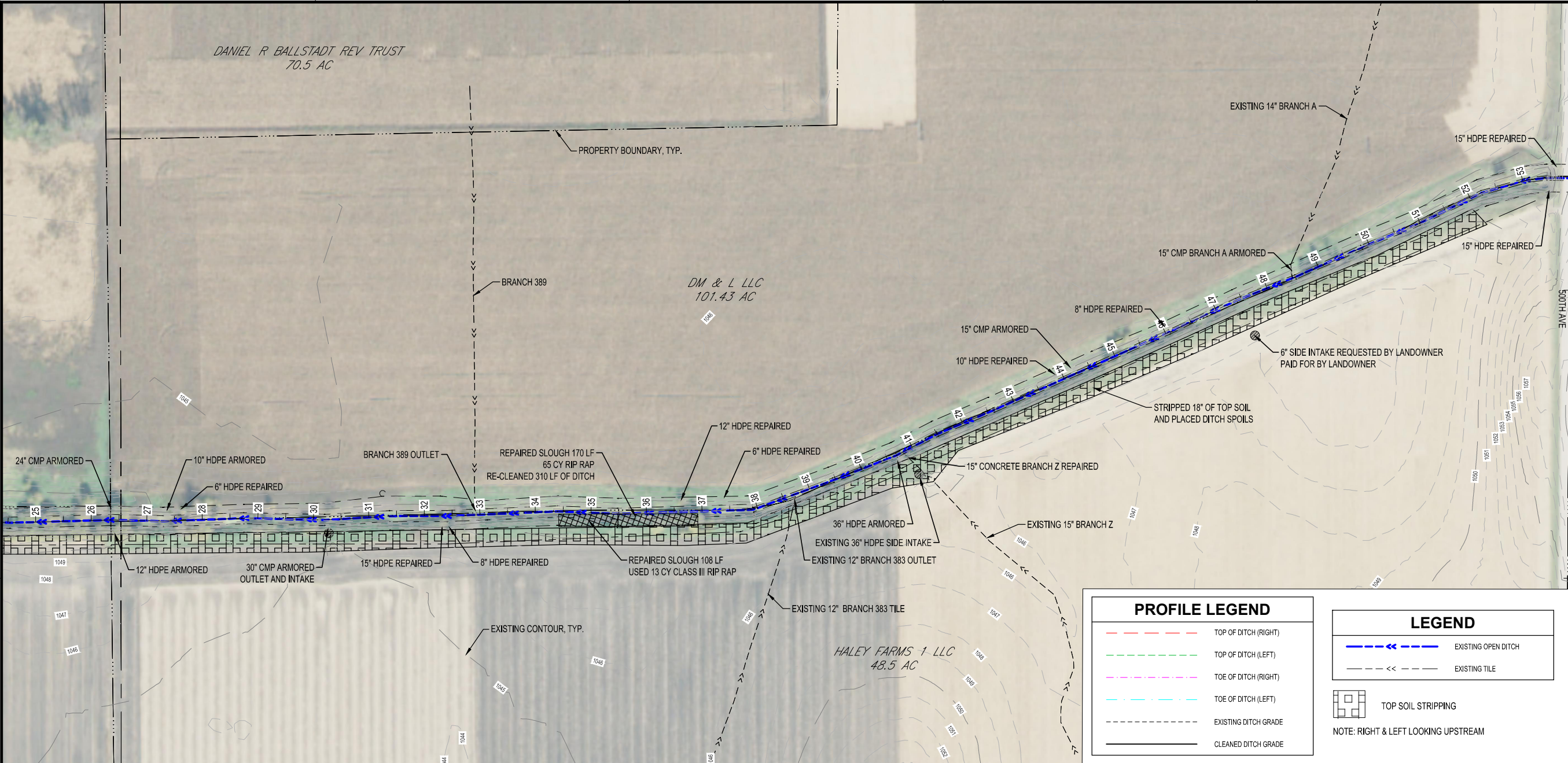
TITLE

**MAINLINE PLAN & PROFILE**

SHEET

**10** OF 18





Scale in Feet

I HEREBY CERTIFY THAT THIS PLAN, SPECIFICATION, OR REPORT WAS PREPARED BY ME OR UNDER MY DIRECT SUPERVISION AND THAT I AM A DULY LICENSED PROFESSIONAL ENGINEER UNDER THE LAWS OF THE STATE OF MINNESOTA.

CHARLES J. BRANDEL  
DATE: 6-21-21 LIC. NO. 43359

**AS-BUILT**  
**06/21/2021**

THIS DOCUMENT IS THE PROPERTY OF I & S GROUP, INC. AND MAY NOT BE USED, COPIED OR DUPLICATED WITHOUT PRIOR WRITTEN CONSENT.

PROJECT  
**FARIBAULT COUNTY**  
**COUNTY DITCH 20**

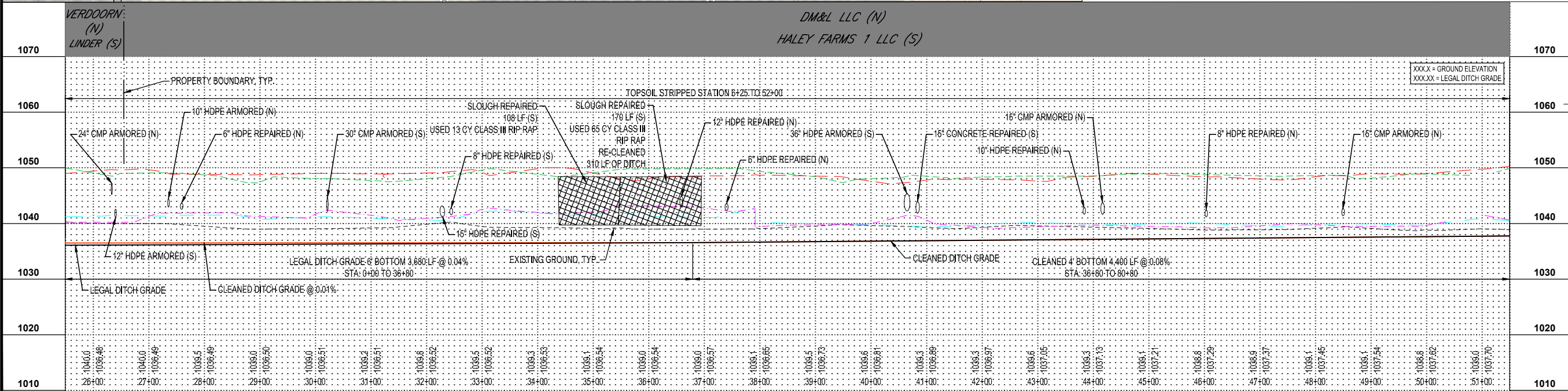
FARIBAULT COUNTY MINNESOTA

REVISION SCHEDULE		
DATE	DESCRIPTION	BY
2-12-18	ADDENDUM #1	FPS
2-22-18	ADDENDUM #2	KDS
9-10-18	ADDENDUM #3	LHH

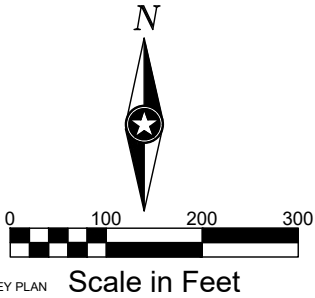
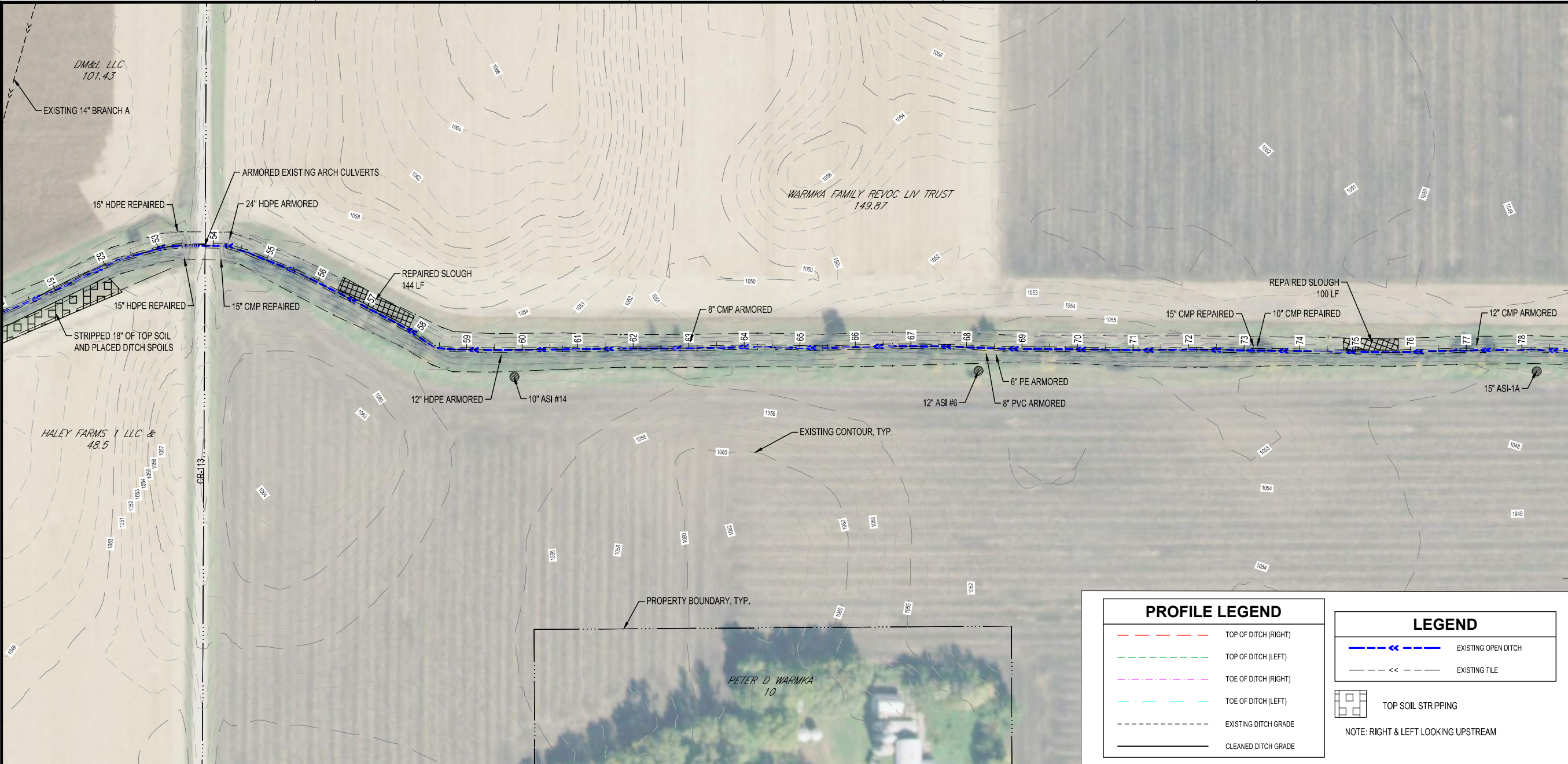
PROJECT NO.	16-19916
CAD FILE NAME	19916-PLAN & PROFILE
DRAWN BY	AD
DESIGNED BY	RAG
REVIEWED BY	CJB
ORIGINAL ISSUE DATE	11-1-16
CLIENT PROJECT NO.	

TITLE  
**MAINLINE PLAN & PROFILE**

SHEET







KEY PLAN

I HEREBY CERTIFY THAT THIS PLAN, SPECIFICATION, OR REPORT WAS PREPARED BY ME OR UNDER MY DIRECT SUPERVISION AND THAT I AM A DULY LICENSED PROFESSIONAL ENGINEER UNDER THE LAWS OF THE STATE OF MINNESOTA

CHARLES J. BRANDEL

DATE 6-21-21 LIC. NO. 43359

**AS-BUILT**  
**06/21/2021**

THIS DOCUMENT IS THE PROPERTY OF I & S GROUP, INC. AND MAY NOT BE USED, COPIED OR DUPLICATED WITHOUT PRIOR WRITTEN CONSENT.

PROJECT

**FARIBAULT COUNTY**

**COUNTY DITCH 20**

FARIBAULT COUNTY MINNESOTA

REVISION SCHEDULE		
DATE	DESCRIPTION	BY
2-12-18	ADDENDUM #1	FPS
2-22-18	ADDENDUM #2	KDS
9-10-18	ADDENDUM #3	LHH

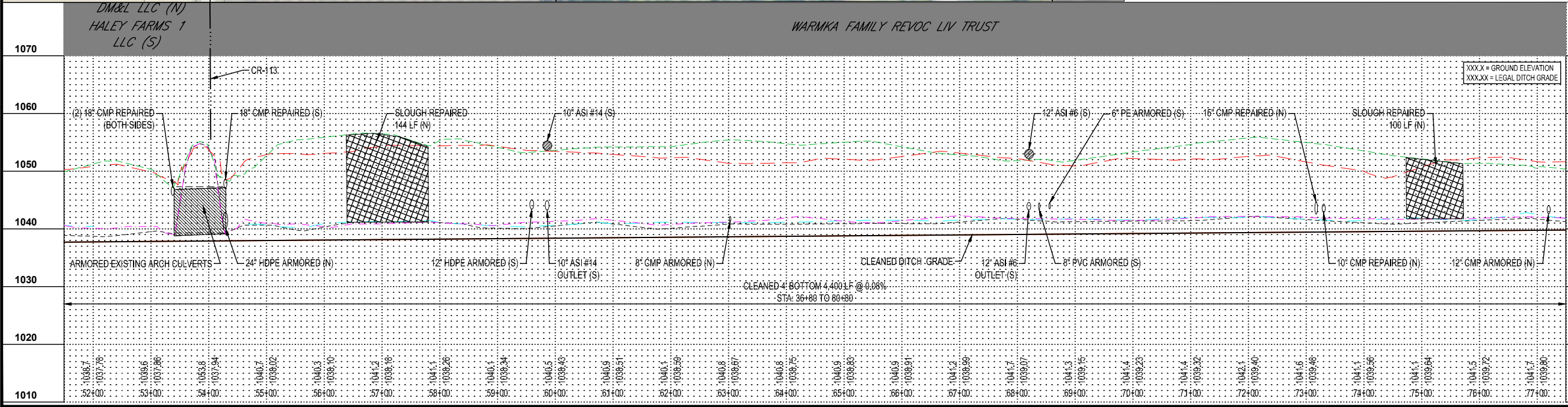
PROJECT NO.	16-19916
CAD FILE NAME	19916-PLAN & PROFILE
DRAWN BY	AD
DESIGNED BY	RAG
REVIEWED BY	CJB
ORIGINAL ISSUE DATE	6-21-21
CLIENT PROJECT NO.	-

TITLE

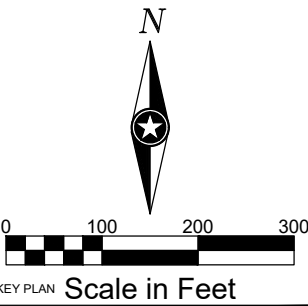
**MAINLINE PLAN & PROFILE**

SHEET

**12** OF 18







I HEREBY CERTIFY THAT THIS PLAN, SPECIFICATION, OR REPORT WAS PREPARED BY ME OR UNDER MY DIRECT SUPERVISION AND THAT I AM A DULY LICENSED PROFESSIONAL ENGINEER UNDER THE LAWS OF THE STATE OF MINNESOTA.

CHARLES J. BRANDEL

DATE: 6-21-21 LIC. NO. 43359

**AS-BUILT**  
**06/21/2021**

THIS DOCUMENT IS THE PROPERTY OF I & S GROUP, INC. AND MAY NOT BE USED, COPIED OR DUPLICATED WITHOUT PRIOR WRITTEN CONSENT.

PROJECT

**FARIBAULT COUNTY**

**COUNTY DITCH 20**

FARIBAULT COUNTY MINNESOTA

REVISION SCHEDULE		
DATE	DESCRIPTION	BY
2-12-18	ADDENDUM #1	FPS
2-22-18	ADDENDUM #2	KDS
9-10-18	ADDENDUM #3	LHH

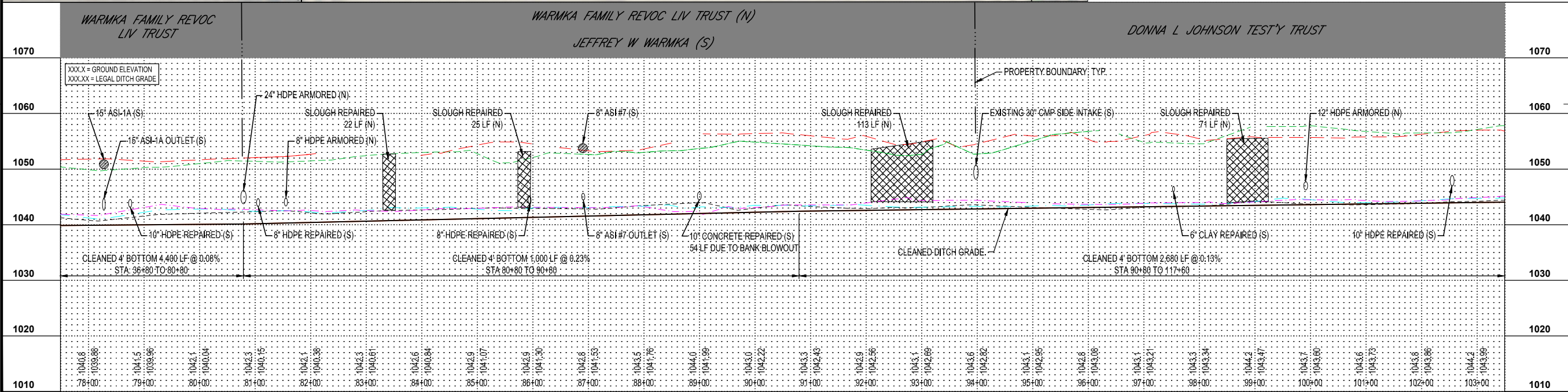
PROJECT NO.	16-19916
CAD FILE NAME	19916-PLAN & PROFILE
DRAWN BY	AD
DESIGNED BY	RAG
REVIEWED BY	CJB
ORIGINAL ISSUE DATE	-/-/-
CLIENT PROJECT NO.	-

TITLE

**MAINLINE PLAN & PROFILE**

SHEET

**13** OF 18







**LEGEND**  

EXISTING OPEN DITCH

EXISTING TILE

**PROFILE LEGEND**  

TOP OF DITCH (RIGHT)

TOP OF DITCH (LEFT)

TOE OF DITCH (RIGHT)

TOE OF DITCH (LEFT)

EXISTING DITCH GRADE

CLEANED DITCH GRADE

NOTE: RIGHT & LEFT LOOKING UPSTREAM



N

0 100 200 300

Scale in Feet

I HEREBY CERTIFY THAT THIS PLAN, SPECIFICATION, OR REPORT WAS PREPARED BY ME OR UNDER MY DIRECT SUPERVISION AND THAT I AM A DULY LICENSED PROFESSIONAL ENGINEER UNDER THE LAWS OF THE STATE OF MINNESOTA.

CHARLES J. BRANDEL

DATE 6-21-21 LIC. NO. 43359

**AS-BUILT**  
**06/21/2021**

THIS DOCUMENT IS THE PROPERTY OF I & S GROUP, INC. AND MAY NOT BE USED, COPIED OR DUPLICATED WITHOUT PRIOR WRITTEN CONSENT.

PROJECT

**FARIBAULT COUNTY**

**COUNTY DITCH 20**

FARIBAULT COUNTY MINNESOTA

REVISION SCHEDULE		
DATE	DESCRIPTION	BY
2-12-18	ADDENDUM #1	FPS
2-22-18	ADDENDUM #2	KDS
9-10-18	ADDENDUM #3	LHH

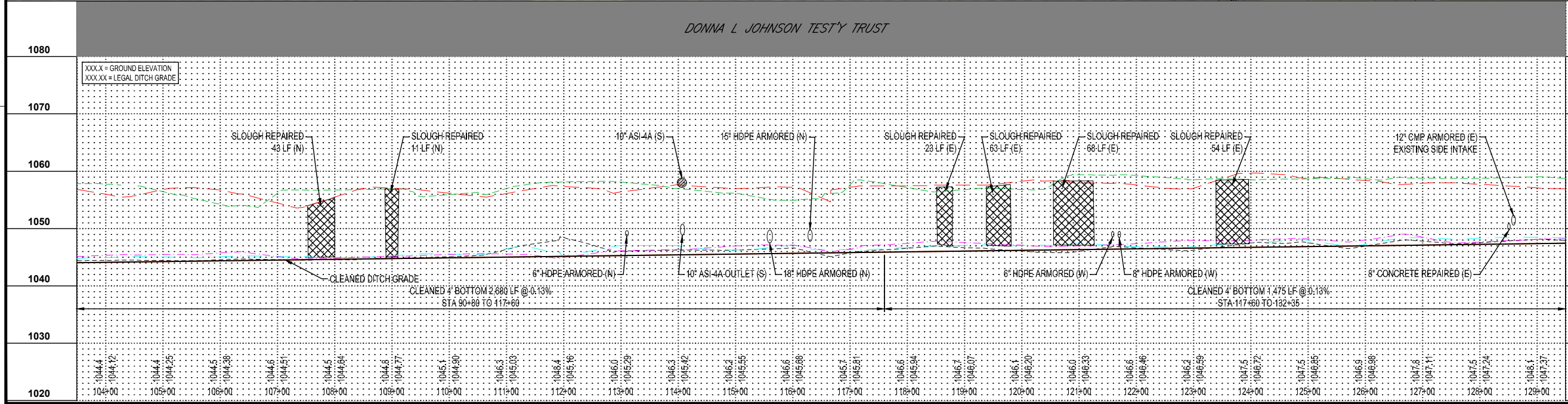
PROJECT NO.	16-19916
CAD FILE NAME	19916-PLAN & PROFILE
DRAWN BY	AD
DESIGNED BY	RAG
REVIEWED BY	CJB
ORIGINAL ISSUE DATE	11-1-18
CLIENT PROJECT NO.	-

TITLE

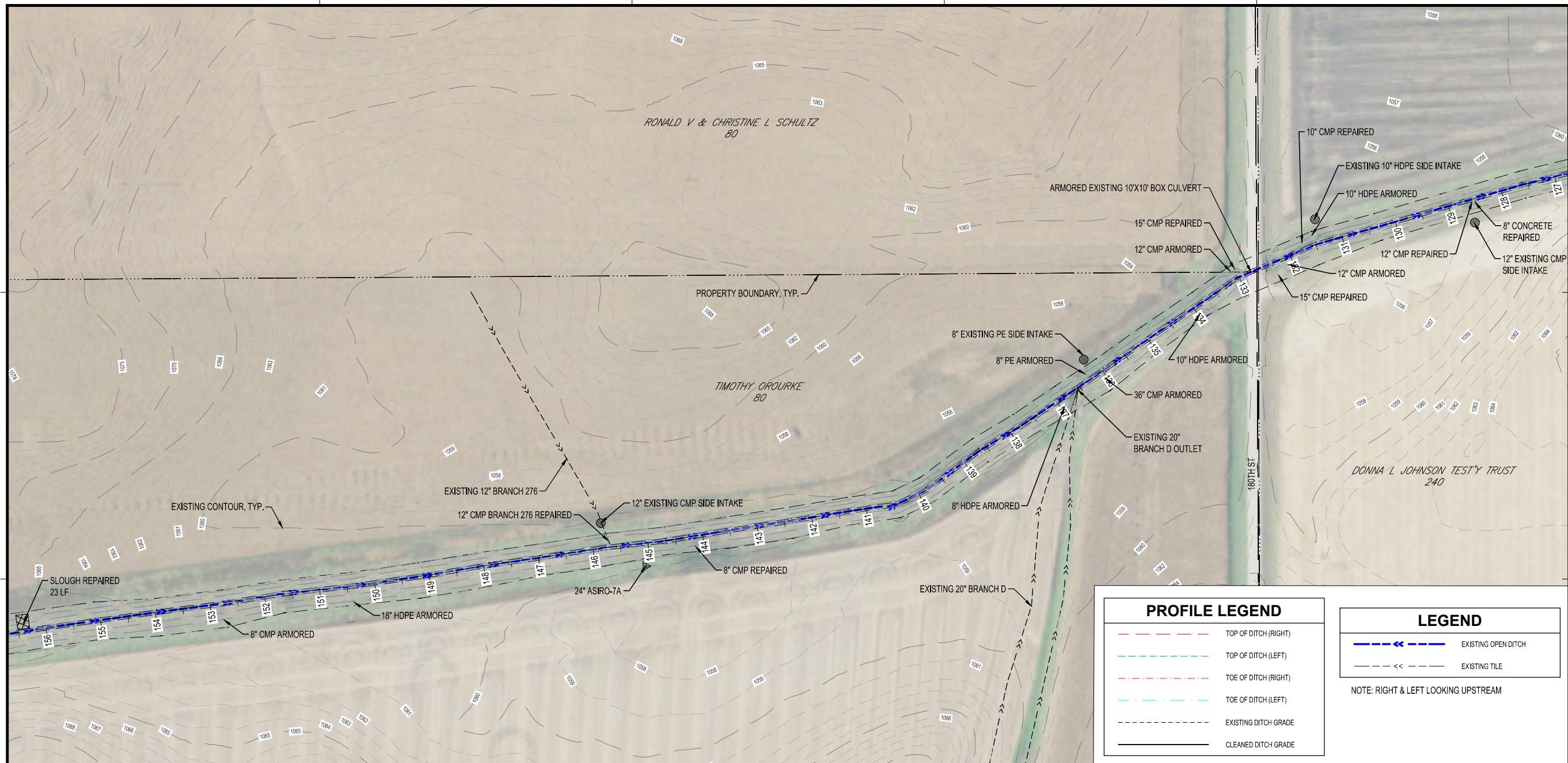
**MAINLINE PLAN & PROFILE**

SHEET

**14** OF 18







Scale in Feet

KEY PLAN

I HEREBY CERTIFY THAT THIS PLAN, SPECIFICATION, OR REPORT WAS PREPARED BY ME OR UNDER MY DIRECT SUPERVISION AND THAT I AM A DULY LICENSED PROFESSIONAL ENGINEER UNDER THE LAWS OF THE STATE OF MINNESOTA.

CHARLES J. BRANDEL

DATE 6-21-21 LIC. NO. 43359

**AS-BUILT**  
**06/21/2021**

THIS DOCUMENT IS THE PROPERTY OF I & S GROUP, INC. AND MAY NOT BE USED, COPIED OR DUPLICATED WITHOUT PRIOR WRITTEN CONSENT.

PROJECT

**FARIBAULT COUNTY**

**COUNTY DITCH 20**

FARIBAULT COUNTY MINNESOTA

REVISION SCHEDULE		
DATE	DESCRIPTION	BY
2-12-18	ADDENDUM #1	FPS
2-22-18	ADDENDUM #2	KDS
9-10-18	ADDENDUM #3	LHH

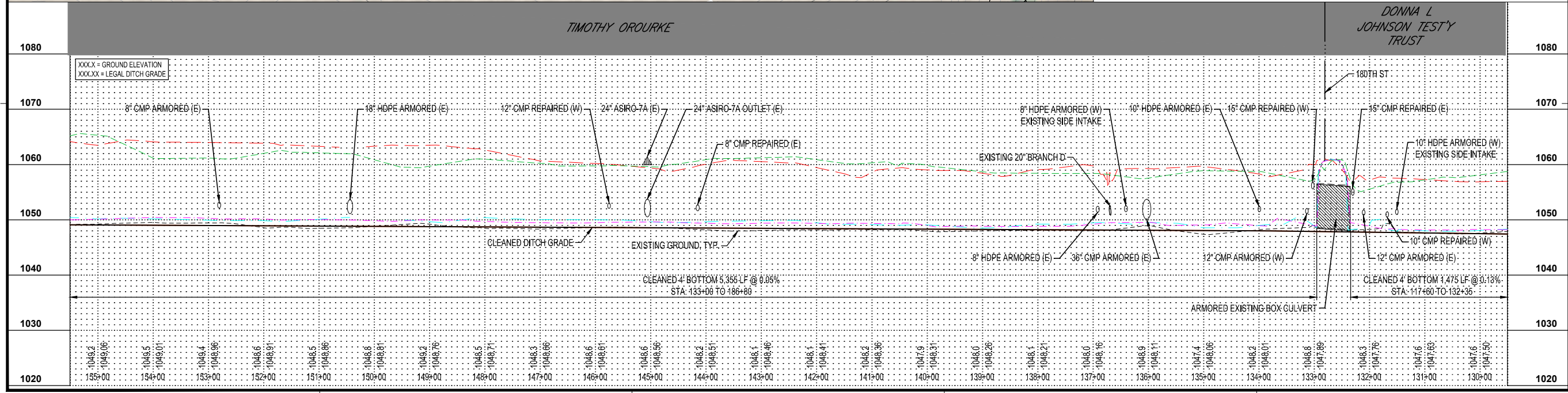
PROJECT NO.	16-19916
CAD FILE NAME	19916-PLAN & PROFILE
DRAWN BY	AD
DESIGNED BY	RAG
REVIEWED BY	CJB
ORIGINAL ISSUE DATE	---/---/---
CLIENT PROJECT NO.	-

TITLE

**MAINLINE PLAN & PROFILE**

SHEET

**15** OF 18











CHARLES J. BRANDELL

DATE 6-21-21 LIC. NO. 43359

THIS DOCUMENT IS THE PROPERTY OF I & S GROUP, INC.  
AND MAY NOT BE USED, COPIED OR DUPLICATED  
WITHOUT PRIOR WRITTEN CONSENT.

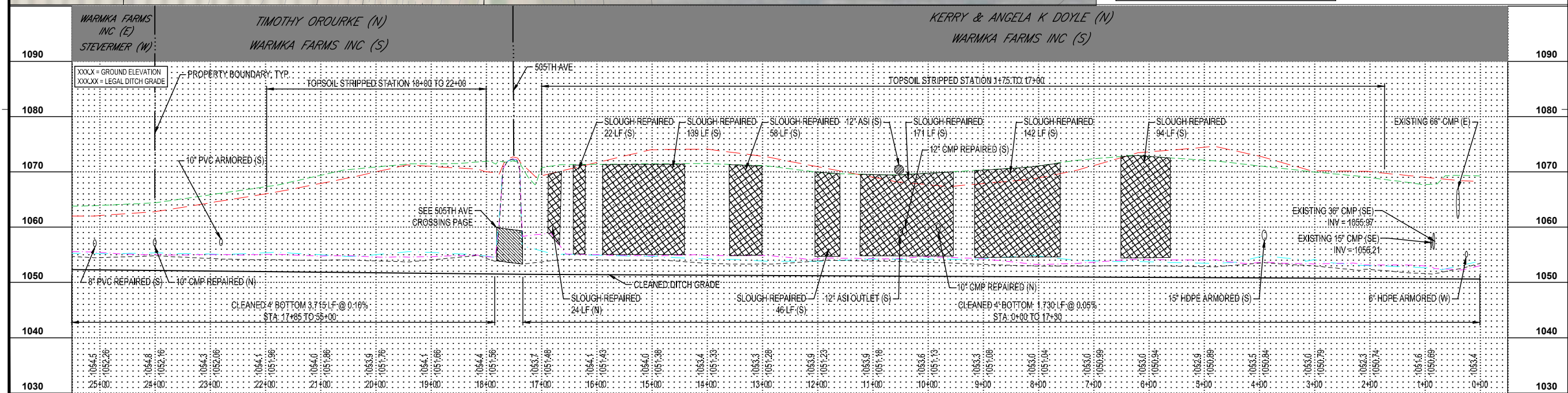
# FARIBAULT COUNTY

REVISION SCHEDULE		
DATE	DESCRIPTION	BY
2-12-18	ADDENDUM #1	FPS
2-22-18	ADDENDUM #2	KDS
9-10-18	ADDENDUM #3	LHH

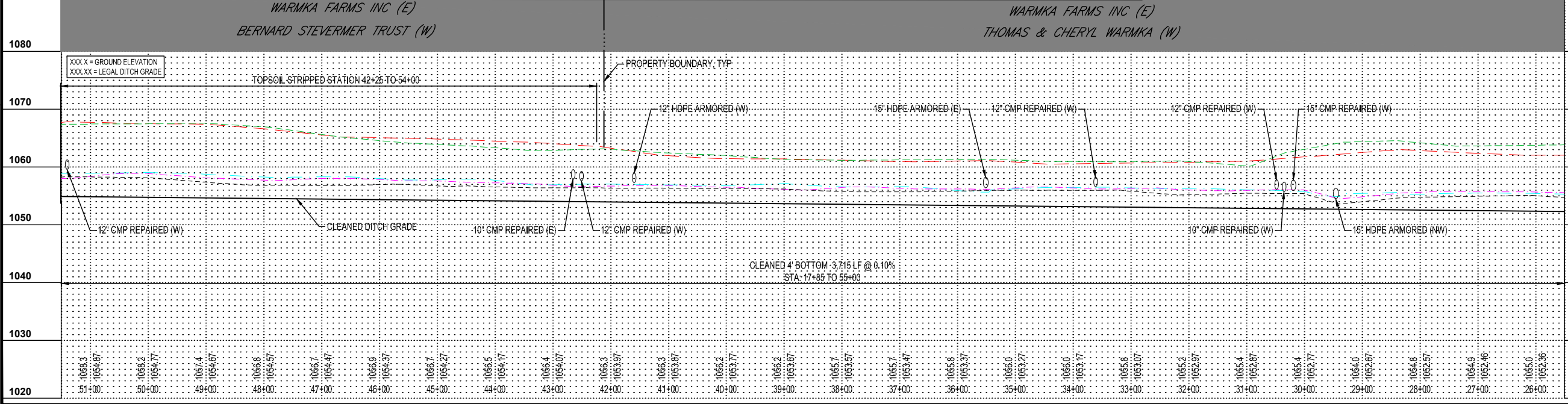
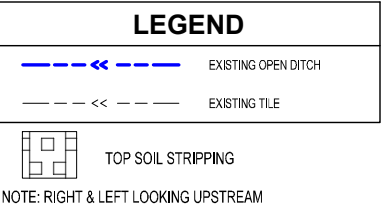
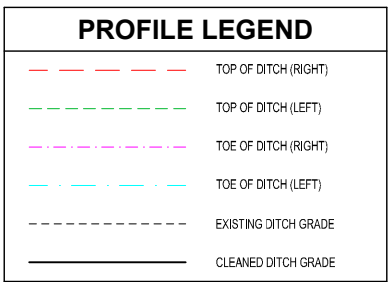
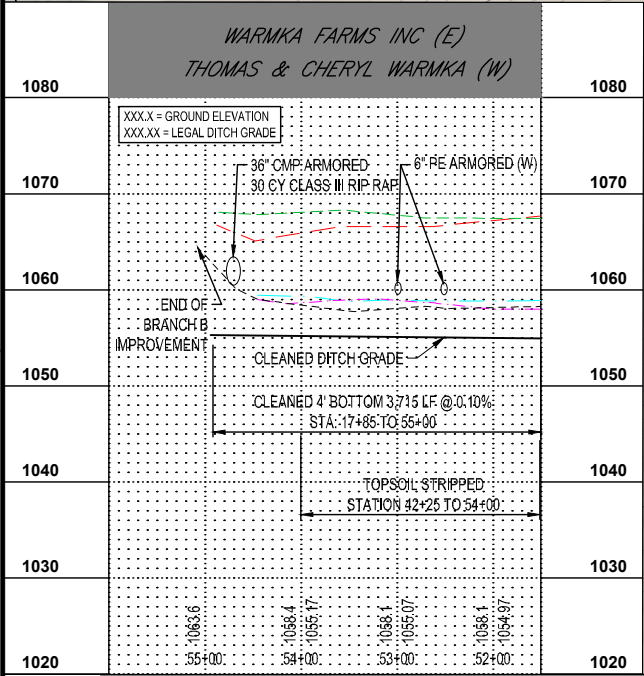
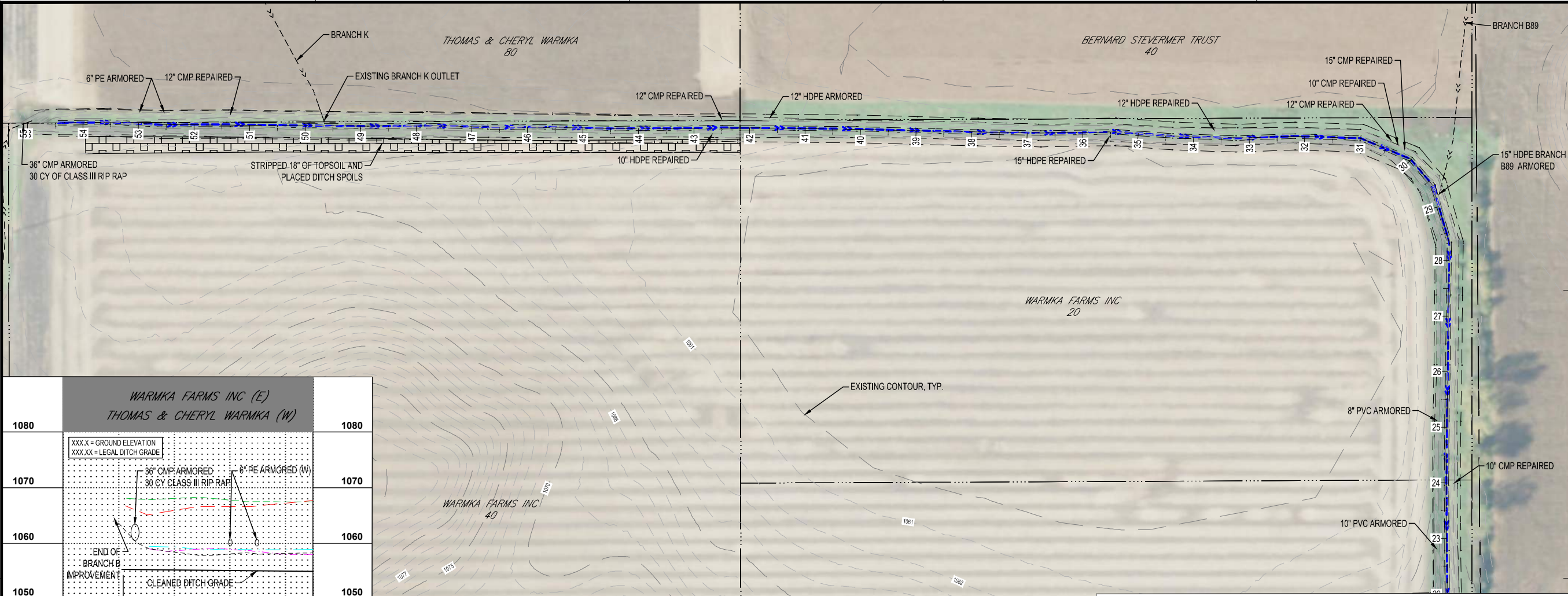
TITLE

**BRANCH B PLAN &  
PROFILE**

OF 18







ISG

Scale in Feet

KEY PLAN

I HEREBY CERTIFY THAT THIS PLAN, SPECIFICATION, OR REPORT WAS PREPARED BY ME OR UNDER MY DIRECT SUPERVISION AND THAT I AM A DULY LICENSED PROFESSIONAL ENGINEER UNDER THE LAWS OF THE STATE OF MINNESOTA.

CHARLES J. BRANDEL

DATE: 6-21-21 LIC. NO. 43359

**AS-BUILT**  
**06/21/2021**

THIS DOCUMENT IS THE PROPERTY OF I & S GROUP, INC. AND MAY NOT BE USED, COPIED OR DUPLICATED WITHOUT PRIOR WRITTEN CONSENT.

PROJECT

**FARIBAULT COUNTY**

**COUNTY DITCH 20**

FARIBAULT COUNTY MINNESOTA

REVISION SCHEDULE		
DATE	DESCRIPTION	BY
2-12-18	ADDENDUM #1	FPS
2-22-18	ADDENDUM #2	KDS
9-10-18	ADDENDUM #3	LHH

PROJECT NO.	16-19916
CAD FILE NAME	19916-PLAN & PROFILE
DRAWN BY	AD
DESIGNED BY	RAG
REVIEWED BY	CJB
ORIGINAL ISSUE DATE	11/1/18
CLIENT PROJECT NO.	-

TITLE

**BRANCH B PLAN & PROFILE**

SHEET

**18** OF 18



## APPENDIX B: Damages



Faribault County Ditch No. 20  
2019 Construction Damages Summary  
Final Per As-Built  
Date: 3/3/2020



	General Tract Information						Temporary Damages			
	40 Description	40 Owner	Parcel ID	Approximate Station Range	Project Description	Crop Type (Corn/Soybeans)	Contractor Damages due to Construction (Acres)	Non-Crop Damages due to Construction (Acres)	Crop Damages due to Construction (Acres)	Total Damages (Acres)
Mainline	SW 1/4 SE 1/4 SECTION 1 BARBER TOWNSHIP	Stevermer, Mary Sonnek	010010100	0+00 to 13+00	Ditch Cleaning and Repairs	Grass	0.00		0.49	0.49
	SE 1/4 SE 1/4 SECTION 1 BARBER TOWNSHIP	Verdoorn, Michael	010010900	13+00 to 25+00	Ditch Cleaning and Repairs	Grass	0.00		0.23	0.23
	SE 1/4 SE 1/4 SECTION 1 BARBER TOWNSHIP	Linder, Donald D & Nancy K	010010700	13+00 to 25+00	Ditch Cleaning and Repairs	Grass	0.00		1.27	1.27
	S 1/4 SW 1/4 SECTION 6 WALNUT LAKE TOWNSHIP	DM&L LLC	190060100	25+00 to 53+50	Ditch Cleaning and Repairs	Grass	0.00		1.10	1.10
	S 1/4 SW 1/4 SECTION 6 WALNUT LAKE TOWNSHIP	Haley Farms LLC	190060700	25+00 to 53+50	Ditch Cleaning and Repairs	Grass	0.00		2.72	2.72
	1/4 SE 1/4 SECTION 6 WALNUT LAKE TOWNSHIP	Warmka Family Revoc Liv Trust	190060401	54+00 to 80+50	Ditch Cleaning and Repairs	Grass	0.00		2.81	2.81
	SW 1/4 SW 1/4 SECTION 5 WALNUT LAKE TOWNSHIP	Warmka Family Revoc Liv Trust	190050301	80+50 to 94+00	Ditch Cleaning and Repairs	Grass	0.00		0.20	0.20
	SW 1/4 SW 1/4 SECTION 5 WALNUT LAKE TOWNSHIP	Warmka, Jeffrey W	190050300	80+50 to 94+00	Ditch Cleaning and Repairs	Grass	0.00		0.77	0.77
	S 1/4 S 1/4 SECTION 5 WALNUT LAKE TOWNSHIP	Donna L Johnson Test'y Trust	190050100	94+00 to 132+00	Ditch Cleaning and Repairs	Grass	0.00		3.10	3.10
	NW 1/4 NE 1/4 SECTION 8 WALNUT LAKE TOWNSHIP	Ronald V & Christine L Schultz Living Trust	190080100	132+50 to 133+00	Ditch Cleaning and Repairs	Grass	0.00		0.07	0.07
	E 1/4 NE 1/4 SECTION 8 WALNUT LAKE TOWNSHIP	Orouke, Timothy	190080600	133+00 to 160+75	Ditch Cleaning and Repairs	Grass	0.00		2.28	2.28
	SE 1/4 SE 1/4 SECTION 8 WALNUT LAKE TOWNSHIP	Orouke, Timothy	190080400	160+75 to 174+00	Ditch Cleaning and Repairs	Grass	0.00		1.46	1.46
	SE 1/4 SE 1/4 SECTION 8 WALNUT LAKE TOWNSHIP	Doyle, Kerry & Angela K	190080301	174+00 to 187+00	Ditch Cleaning and Repairs	Grass	0.00		1.40	1.40
	SE 1/4 SE 1/4 SECTION 8 WALNUT LAKE TOWNSHIP	Stepun, Steven R & Beverly A	190080300	174+00 to 187+00	Ditch Cleaning and Repairs	Grass	0.00		0.57	0.57
Mainline Total							0.00	0.00	18.47	18.47



Faribault County Ditch No. 20  
2019 Construction Damages Summary  
Final Per As-Built  
Date: 3/4/2020



	General Tract Information						Temporary Damages			
	40 Description	40 Owner	Parcel ID	Approximate Station Range	Project Description	Crop Type (Corn/Soybeans)	Contractor Damages due to Construction (Acres)	Non-Crop Damages due to Construction (Acres)	Crop Damages due to Construction (Acres)	Total Damages (Acres)
Branch B	S 1/4 NE 1/4 SECTION 17 WALNUT LAKE TOWNSHIP	Warmka Farms Inc.	190170700	0+00 to 17+00	Ditch Cleaning and Repairs	Grass	0.00		1.25	1.25
	SE 1/4 SW 1/4 SECTION 8 WALNUT LAKE TOWNSHIP	Timothy Oourke	190080200	17+50 to 29+00	Ditch Cleaning and Repairs	Grass	0.00		1.35	1.35
	NE 1/4 NW 1/4 SECTION 17 WALNUT LAKE TOWNSHIP	Warmka Farms Inc.	190170300	17+50 to 24+00	Ditch Cleaning and Repairs	Grass	0.00		0.44	0.44
	NE 1/4 NW 1/4 SECTION 17 WALNUT LAKE TOWNSHIP	Warmka Farms Inc.	190170900	24+00 to 42+00	Ditch Cleaning and Repairs	Grass	0.00		1.00	1.00
	NW 1/4 NW 1/4 SECTION 17 WALNUT LAKE TOWNSHIP	Bernard Stevermer Trust	190170400	29+00 to 42+00	Ditch Cleaning and Repairs	Grass	0.00		0.40	0.40
	SW 1/4 NW 1/4 SECTION 17 WALNUT LAKE TOWNSHIP	Warmka, Thomas & Cheryl	190170200	42+00 to 55+00	Ditch Cleaning and Repairs	Grass	0.00		0.58	0.58
	SE 1/4 NW 1/4 SECTION 17 WALNUT LAKE TOWNSHIP	Warmka Farms Inc.	190170800	42+00 to 55+00	Ditch Cleaning and Repairs	Grass	0.00		0.66	0.66
	NE 1/4 SW 1/4 SECTION 17 WALNUT LAKE TOWNSHIP	Thomas Richard Fugle	190170600	55+00 to End Station	Ditch Cleaning and Repairs	Grass	0.00		0.02	0.02
Branch B Total							0.00	0.00	5.70	5.70



## APPENDIX C: Final Pay Request



<b>Contractors's Application for Payment No.</b>		<b>6</b>
Application Period: 1/4/2020 - 6/23/2021		Application Date: 6/22/2021
To (Owner): Faribault County Drainage Authority 415 S Grove Street Suite 8 Blue Earth, MN 56013	From (Contractor): Brunz Construction Company, Inc 205 Walnut Ave Madison Lake, MN 56063	Via (Engineer): Chuck Brandel 115 E Hickory St #300 Mankato, MN 56001
Project: Faribault County Ditch 20 - Repairs	Contract:	
Owner's Contract No.:	Contractor's Project No.	Engineer's Project No. 19916

**Application For Payment  
Change Order Summary**

Approved Change Orders		
Change Order Number	Additions	Deductions
3	\$25,625.00	\$0.00
<b>Totals</b>	<b>\$25,625.00</b>	<b>\$0.00</b>
<b>Net Change By Change Orders</b>	<b>\$25,625.00</b>	

1. ORIGINAL CONTRACT PRICE	\$263,732.35
2. Net change by Change Orders	\$25,625.00
3. Current Contract Price (Line 1 ± 2)	\$289,357.35
4. TOTAL COMPLETED AND STORED TO DATE	\$205,720.00
5. Temporary Withholdings	\$0.00
6. TOTAL COMPLETED AND STORED TO DATE LESS TEMPORARY WITHHOLDINGS	\$205,720.00
7. RETAINAGE:	
a 0.00% x \$205,720.00 Work Completed	\$0.00
b 0.00% x \$0.00 Stored Materials	\$0.00
c Total Retainage (7.a + 7.b)	\$0.00
8. Amount Eligible To Date (Lines 6 - Line 7.c)	\$205,720.00
9. Less Previous Payments (Line 8 from prior Applications)	\$187,444.31
10. Amount Due This Application	\$18,275.69
11. Balance To Finish, Plus Retainage	\$0.00

The undersigned Contractor certifies, to the best of its knowledge, the following:

(1) All previous progress payments received from Owner on account of Work done under the Contract have been applied on account to discharge Contractor's legitimate obligations incurred in connection with the Work covered by prior Applications for Payment;

(2) Title to all Work, materials and equipment incorporated in said Work, or otherwise listed in or covered by this Application for Payment, will pass to Owner at time of payment free and clear of all Liens, security interests, and encumbrances (except such as are covered by a bond acceptable to Owner indemnifying Owner against any such Liens, security interest, or encumbrances); and

(3) All the Work covered by this Application for Payment is in accordance with the Contract Documents and is not defective.

**Contractor Signature**

By: Thomas R. Brunz Date: 6/23/21

Payment of:	<b>\$18,275.69</b>	
	(Line 8 or other - attach explanation of the other amount)	
is recommended by:	<u>Mark Kruger</u>	<u>06/24/2021</u>
	(Engineer)	(Date)
Payment of:		
	(Line 8 or other - attach explanation of the other amount)	(Date)
is approved by:		
	(Owner)	(Date)
Approved by:		
	Funding or Financing Entity (if applicable)	(Date)



# Completed Items



**Project Number:** 19916      **Engineer:** Chuck Brandel      **Client:** Faribault County Drainage Authority      **Contractor** : Brunz Construction Company, Inc      **Pay Request** 6  
**Project Name:** Faribault County Ditch 20 - Repairs      115 E Hickory St #300      415 S Grove Street Suite 8      205 Walnut Ave      **Starting:** 1/4/2020  
**Project Location:** Faribault County      Mankato, MN 56001      Blue Earth, MN 56013      Madison Lake, MN 56063      **Ending:** 6/23/2021

Item Numbe	Bid Item	Unit	Quantity	Unit Price	Total Amount	Quantity This Pay	Amount This Pay	Quantity To Date	Amount To Date	Quantity Remaining	Amount Remaining
2021.501	MOBILIZATION	LS	1.00	\$9,000.00	\$9,000.00	0.00	\$0.00	1.00	\$9,000.00	0.00	\$0.00
2101.511	CLEAR AND GRUB TREE (OVER 6")	EA	45.00	\$50.00	\$2,250.00	0.00	\$0.00	0.00	\$0.00	0.00	\$0.00
2101.511	TREE CLEARING AND HEAVY VEGETATION REMOVAL	LF	1,600.00	\$5.00	\$8,000.00	0.00	\$0.00	1600.00	\$8,000.00	0.00	\$0.00
2105.602	RESOTRE GRAVEL ROAD OR DRIVEWAY	EA	1.00	\$1,500.00	\$1,500.00	0.00	\$0.00	1.00	\$1,500.00	0.00	\$0.00
2105.603	DITCH CLEANING (4' WIDE DITCH BOTTOM)	LF	20,410.00	\$1.90	\$38,779.00	0.00	\$0.00	21880.00	\$41,572.00	0.00	\$0.00
2105.603	DITCH CLEANING (6' WIDE DITCH BOTTOM)	LF	3,680.00	\$2.42	\$8,905.60	310.00	\$750.20	3990.00	\$9,655.80	0.00	\$0.00
2105.603	SLOUGH REPAIR	LF	3,185.00	\$3.00	\$9,555.00	170.00	\$510.00	2867.00	\$8,601.00	0.00	\$0.00
2106.501	TOP SOIL STRIPPING	LF	9,470.00	\$2.50	\$23,675.00	0.00	\$0.00	9350.00	\$23,375.00	0.00	\$0.00
2412.511	PROTECT AND ARMOR CULVERT CROSSING	EA	2.00	\$1,500.00	\$3,000.00	0.00	\$0.00	2.00	\$3,000.00	0.00	\$0.00
2506.502	INSTALL 18-INCH ASI OUTLET ASSEMBLY	EA	2.00	\$1,125.00	\$2,250.00	0.00	\$0.00	0.00	\$0.00	0.00	\$0.00
2506.502	INSTALL 15-INCH ASI RISER ASSEMBLY W/TRASH GRATE	EA	3.00	\$1,100.00	\$3,300.00	0.00	\$0.00	1.00	\$1,100.00	0.00	\$0.00
2506.502	INSTALL 15-INCH ASI OUTLET ASSEMBLY	EA	2.00	\$1,075.00	\$2,150.00	0.00	\$0.00	1.00	\$1,075.00	0.00	\$0.00
2506.502	INSTALL 12-INCH ASI RISER ASSEMBLY W/TRASH GRATE	EA	5.00	\$875.00	\$4,375.00	0.00	\$0.00	2.00	\$1,750.00	0.00	\$0.00
2506.502	INSTALL 12-INCH ASI RISER ASSEMBLY W/STANDARD HICKENBOTTOM	EA	1.00	\$1,125.00	\$1,125.00	0.00	\$0.00	0.00	\$0.00	0.00	\$0.00
2506.502	INSTALL 12-INCH ASI OUTLET ASSEMBLY	EA	5.00	\$950.00	\$4,750.00	0.00	\$0.00	2.00	\$1,900.00	0.00	\$0.00
2506.502	INSTALL 10-INCH ASI RISER ASSEMBLY W/STANDARD HICKENBOTTOM	EA	3.00	\$850.00	\$2,550.00	0.00	\$0.00	2.00	\$1,700.00	0.00	\$0.00
2506.502	CLASS III RIPRAP WITH GEOTEXTILE FABRIC	CY	137.00	\$57.00	\$7,809.00	65.00	\$3,705.00	116.60	\$6,646.20	0.00	\$0.00
2506.502	INSTALL 8-INCH ASI OUTLET ASSEMBLY	EA	1.00	\$875.00	\$875.00	0.00	\$0.00	1.00	\$875.00	0.00	\$0.00
2506.502	INSTALL 10-INCH ASI OUTLET ASSEMBLY	EA	3.00	\$900.00	\$2,700.00	0.00	\$0.00	2.00	\$1,800.00	0.00	\$0.00
2506.502	INSTALL 8-INCH ASI RISER ASSEMBLY W/STANDARD HICKENBOTTOM	EA	1.00	\$800.00	\$800.00	0.00	\$0.00	1.00	\$800.00	0.00	\$0.00
2506.502	INSTALL 24-INCH ASI OUTLET ASSEMBLY	EA	5.00	\$1,300.00	\$6,500.00	0.00	\$0.00	4.00	\$5,200.00	0.00	\$0.00
2506.502	INSTALL 24-INCH ASI RISER ASSEMBLY W/TRASH GRATE	EA	5.00	\$1,250.00	\$6,250.00	0.00	\$0.00	4.00	\$5,000.00	0.00	\$0.00
2506.603	36-INCH TILE OUTLET (20 LF OF PIPE & RIPRAP ON GEOTEXTILE FABRIC)	EA	4.00	\$1,150.00	\$4,600.00	0.00	\$0.00	0.00	\$0.00	0.00	\$0.00
2506.603	ARMOR TILE OUTET (RIPRAP & GEOTEXTILE FABRIC)	EA	35.00	\$300.00	\$10,500.00	0.00	\$0.00	44.00	\$13,200.00	0.00	\$0.00
2506.603	8-INCH TILE OUTLET (20 LF OF PIPE & RIPRAP ON GEOTEXTILE FABRIC)	EA	15.00	\$575.00	\$8,625.00	0.00	\$0.00	7.00	\$4,025.00	0.00	\$0.00
2506.603	66-INCH TILE OUTLET (20 LF OF PIPE & RIPRAP ON GEOTEXTILE FABRIC)	EA	1.00	\$2,310.00	\$2,310.00	0.00	\$0.00	0.00	\$0.00	0.00	\$0.00



Item Numbe	Bid Item	Unit	Quantity	Unit Price	Total Amount	Quantity This Pay	Amount This Pay	Quantity To Date	Amount To Date	Quantity Remaining	Amount Remaining
2506.603	30-INCH TILE OUTLET (20 LF OF PIPE & RIPRAP ON GEOTEXTILE FABRIC)	EA	2.00	\$1,000.00	\$2,000.00	0.00	\$0.00	0.00	\$0.00	0.00	\$0.00
2506.603	24-INCH TILE OUTLET (20 LF OF PIPE & RIPRAP ON GEOTEXTILE FABRIC)	EA	5.00	\$900.00	\$4,500.00	0.00	\$0.00	1.00	\$900.00	0.00	\$0.00
2506.603	18-INCH TILE OUTLET (20 LF OF PIPE & RIPRAP ON GEOTEXTILE FABRIC)	EA	9.00	\$775.00	\$6,975.00	0.00	\$0.00	2.00	\$1,550.00	0.00	\$0.00
2506.603	15-INCH TILE OUTLET (20 LF OF PIPE & RIPRAP ON GEOTEXTILE FABRIC)	EA	23.00	\$700.00	\$16,100.00	0.00	\$0.00	9.00	\$6,300.00	0.00	\$0.00
2506.603	12-INCH TILE OUTLET (20 LF OF PIPE & RIPRAP ON GEOTEXTILE FABRIC)	EA	13.00	\$625.00	\$8,125.00	0.00	\$0.00	14.00	\$8,750.00	0.00	\$0.00
2506.603	10-INCH TILE OUTLET (20 LF OF PIPE & RIPRAP ON GEOTEXTILE FABRIC)	EA	19.00	\$600.00	\$11,400.00	0.00	\$0.00	11.00	\$6,600.00	0.00	\$0.00
2506.603	6-INCH TILE OUTLET (20 LF OF PIPE & RIPRAP ON GEOTEXTILE FABRIC)	EA	10.00	\$555.00	\$5,550.00	0.00	\$0.00	5.00	\$2,775.00	0.00	\$0.00
2573.502	INSTALL PERIMETER CONTROL	LF	475.00	\$3.00	\$1,425.00	0.00	\$0.00	0.00	\$0.00	0.00	\$0.00
2575.501	16.5' BUFFER STRIP SEEDING (SEED MIX: BUFFER BLEND WITH TYPE 3 MULCH)	AC	18.25	\$950.00	\$17,337.50	0.00	\$0.00	0.00	\$0.00	0.00	\$0.00
2575.501	STANDARD SIDESLOPE SEEDING (SEED MIX: BUFFER BLEND WITH BFM)	AC	2.20	\$3,250.00	\$7,150.00	1.06	\$3,445.00	1.06	\$3,445.00	0.00	\$0.00
2575.541	BUFFER STRIP MOWING	AC	18.25	\$125.00	\$2,281.25	0.00	\$0.00	0.00	\$0.00	0.00	\$0.00
2575.545	WEED SPRAYING	AC	20.45	\$200.00	\$4,090.00	0.00	\$0.00	0.00	\$0.00	0.00	\$0.00
2575.545	TREE SPRAYING	AC	1.90	\$350.00	\$665.00	0.00	\$0.00	0.00	\$0.00	0.00	\$0.00
					<b>\$263,732.35</b>		<b>\$8,410.20</b>		<b>\$180,095.00</b>		<b>\$0.00</b>

Change	Item Numbe	Bid Item	Unit	Quantity	Unit Price	Total Amount	Quantity This Pay	Amount This Pay	Quantity To Date	Amount To Date	Quantity Remaining	Amount Remaining
3	301.000	Brome Seeding	AC	5.70	\$900.00	\$5,130.00	0.00	\$0.00	5.70	\$5,130.00	0.00	\$0.00
3	302.000	Buffer Seeding	AC	3.10	\$950.00	\$2,945.00	0.00	\$0.00	3.10	\$2,945.00	0.00	\$0.00
3	303.000	CP 21 Seeding	AC	3.90	\$4,500.00	\$17,550.00	0.00	\$0.00	3.90	\$17,550.00	0.00	\$0.00
						<b>\$25,625.00</b>		<b>\$0.00</b>		<b>\$25,625.00</b>		<b>\$0.00</b>



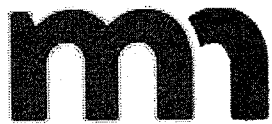
# Payment Request Summary



<b>Project Number:</b> 19916	<b>Engineer:</b> Chuck Brandel	<b>Client:</b> Faribault County Drainage Authority	<b>Contractor</b> : Brunz Construction Company, Inc	<b>Pay Request</b> 6
<b>Project Name:</b> Faribault County Ditch 20 - Repairs	115 E Hickory St #300	415 S Grove Street Suite 8	205 Walnut Ave	<b>Starting:</b> 1/4/2020
<b>Project Location:</b> Faribault County	Mankato, MN 56001	Blue Earth, MN 56013	Madison Lake, MN 56063	<b>Ending:</b> 6/23/2021

Pay Request No.	Start Date	End Date	Retainage	Bid Items Total	Change Order Total	Work Completed This Payrequest	Payment This Payrequest	Total Completed and Stored to Date
1	5/1/2019	5/24/2019	5.00%	\$42,983.60	\$0.00	\$42,983.60	\$40,834.42	\$42,983.60
2	5/25/2019	6/13/2019	5.00%	\$23,060.00	\$0.00	\$23,060.00	\$21,907.00	\$66,043.60
3	6/14/2019	7/2/2019	5.00%	\$61,813.20	\$0.00	\$61,813.20	\$58,722.54	\$127,856.80
4	7/3/2019	7/22/2019	5.00%	\$38,799.00	\$0.00	\$38,799.00	\$36,859.05	\$166,655.80
5	7/23/2019	1/3/2020	5.00%	\$5,029.00	\$25,625.00	\$30,654.00	\$29,121.30	\$197,309.80
6	1/4/2020	6/23/2021	0.00%	\$8,410.20	\$0.00	\$8,410.20	\$18,275.69	\$205,720.00





# DEPARTMENT OF REVENUE

Your Contractor Affidavit request is Approved. A copy of this page MUST be provided to the contractor or government agency that hired you.

Submitted Date and Time: 23-Jun-2021 3:16:23 PM  
Confirmation Number: 0-783-042-720  
Name: BRUNZ CONSTRUCTION CO INC  
ID: 2919603  
**Affidavit Number: 1997279232**  
Project Owner: FARIBAULT COUNTY  
Project Number: 19916  
Project Begin Date: 2/15/2018  
Project End Date: 6/21/2021  
Project Location: FARIBAULT COUNTY  
Project Amount: \$205,720.00  
Subcontractors:

Name	ID	Affidavit Number
EROSION CONTROL PLUS INC	3767232	1969360896

Please [print this page](#) for your records using the print or save functionality built into your browser.





# DEPARTMENT OF REVENUE

19012

Your Contractor Affidavit request is Approved. A copy of this page MUST be provided to the contractor or government agency that hired you.

Submitted Date and Time: 23-Jun-2021 12:03:35 PM  
Confirmation Number: 1-685-080-224  
Name: EROSION CONTROL PLUS INC  
ID: 3767232  
Affidavit Number: 1969360896  
Project Owner: FARIBAULT COUNTY  
Project Number: COUNTY DITCH 20  
Project Begin Date: 8/28/2019  
Project End Date: 9/3/2019  
Project Location: FARIBAULT COUNTY  
Project Amount: \$28,025.00  
Subcontractors: No Subcontractors

Please [print this page](#) for your records using the print or save functionality built into your browser.



## APPENDIX D: Construction Pictures



